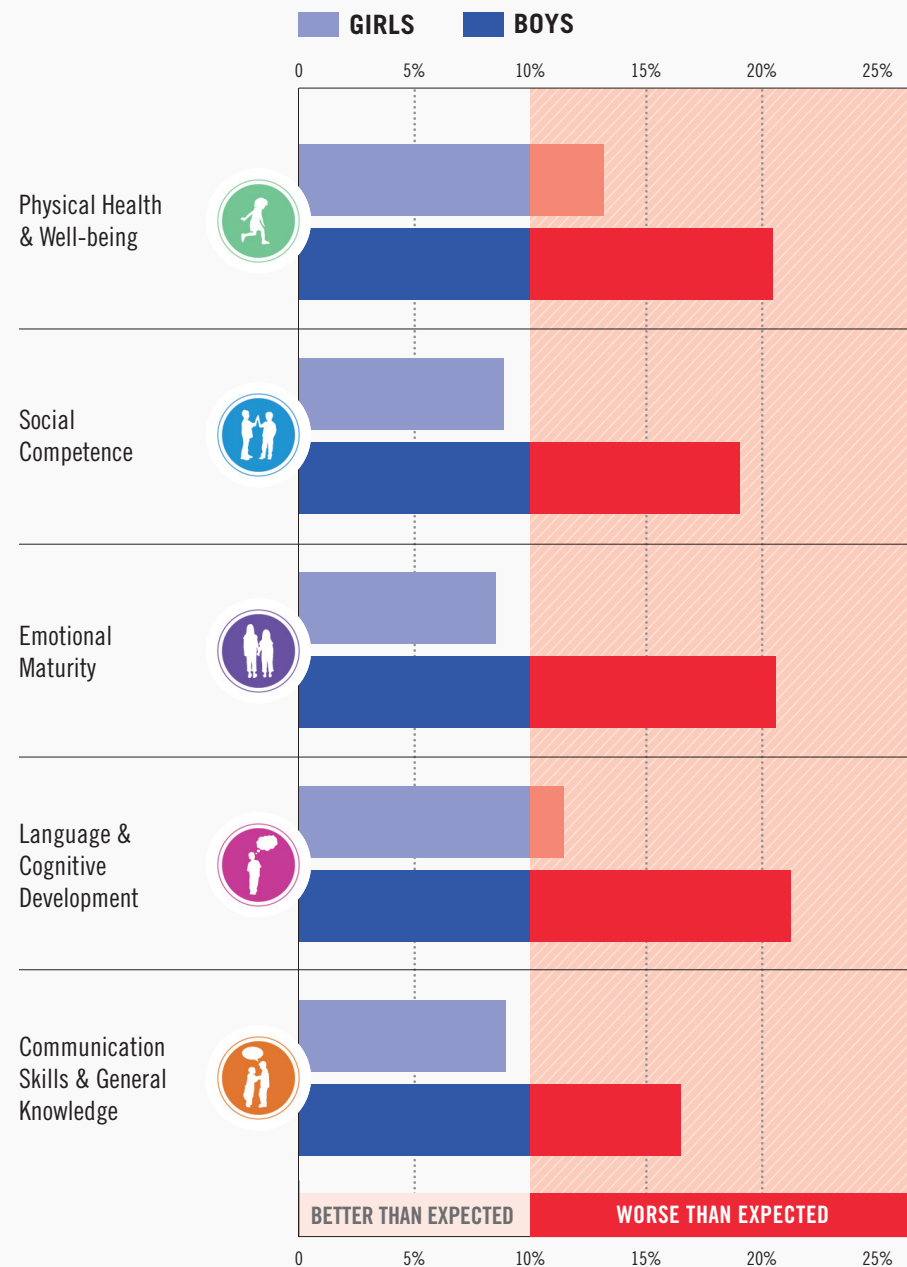



Performance on the EDI Domains by Sex

% of the Metis children **not ready** by domain by sex



 **43%**
of METIS BOYS
are **not ready**

 **26%**
of METIS GIRLS
are **not ready**

Notes/Citations

This study was based on data from 59,926 children; 6,932 (11.6%) were Metis and 52,994 (88.4%) were not Metis.

Disclaimer

The authors acknowledge the Manitoba Centre for Health Policy for use of data contained in the Population Health Research Data Repository under project HIPC#2018/2019-21. The results and conclusions are those of the authors and no official endorsement by the Manitoba Centre for Health Policy, Manitoba Health, or other data providers is intended or should be inferred. Data used in this study are from the Population Research Data Repository housed at the Manitoba Centre for Health Policy, University of Manitoba and were derived from data provided by the Manitoba Metis Federation, Manitoba Health, the Department of Families, Healthy Child Manitoba, and Manitoba Education and Training.

References

- Guhn, M., Janus, M., & Hertzman, C. (2007). The Early Development Instrument: Translating school readiness assessment into community actions and policy planning. *Early Education & Development*, 18(3), 369–374. <https://doi.org/10.1080/10409280701610622>
- Janus, M., & Duku, E. (2007). The school entry gap: Socioeconomic, family, and health factors associated with children's school readiness to learn. *Early Education and Development*, 18(3), 375–403. <https://doi.org/10.1080/10409280701610796a>
- Janus, M., & Offord, D. R. (2007). Development and psychometric properties of the Early Development Instrument (EDI): A measure of children's school readiness. *Canadian Journal of Behavioural Science*, 39(1), 1–22. <https://doi.org/10.1037/cjbs2007001>
- Keating, D. P. (2007). Formative evaluation of the early development instrument: Progress and prospects. *Early Education and Development*, 18(3), 561–570. <https://doi.org/10.1080/10409280701610937>
- Martens, P., Bartlett, J., Burland, E., Prior, H., Burchill, C., Huq, S., ... Bailly, A. (2010). Profile of Metis Health Status and Healthcare Utilization in Manitoba: A Population-based Study. Manitoba Centre for Health Policy in Collaboration with the Manitoba Metis Foundation. Winnipeg, MB: Manitoba Centre for health Policy. Retrieved from [http://mchp-appserv.cpe.umanitoba.ca/reference/MCHP-Metis_Health_Status_Full_Report_\(WEB\)_update_aug11_2011.pdf](http://mchp-appserv.cpe.umanitoba.ca/reference/MCHP-Metis_Health_Status_Full_Report_(WEB)_update_aug11_2011.pdf)
- The Metis Nation of Ontario. (n.d.). A Metis Education Action Plan. Ottawa, ON. Retrieved from http://www.metisnation.org/media/137789/english-action_plan_edu.pdf
- Muhajarine, N., Puchala, C., & Janus, M. (2011). Does the EDI equivalently measure facets of school readiness for Aboriginal and non-Aboriginal children? *Social Indicators Research*, 103(2), 299–314. <https://doi.org/10.1007/s11205-011-9847-0>

Questions

Jino Distasio – j.distasio@uwinnipeg.ca

Aynsle Hinds – a.hinds@uwinnipeg.ca

This research was funded as part of a ten year agreement with the Manitoba Metis Federation.



METIS KIDS: STARTING BEHIND

Early Development Instrument

Early Development Instrument (EDI) is a measure of 'readiness for school' based on developmental milestones. In Manitoba, the EDI is administered province-wide in all 37 public school divisions and participating First Nations and independent schools every 2 years in the spring by Kindergarten teachers. The EDI is a 103 item checklist that measures readiness in 5 domains.

DOMAINS

Communication Skills and General Knowledge

Children can tell a story and communicate with adults and other children.



Emotional Maturity

Children can concentrate on tasks, help others, show patience, and are not often aggressive or angry.



Language and Cognitive Development

Children are interested in reading and writing, can count, and recognize numbers and shapes.



Physical Health and Well-being

Children are healthy, independent, and rested each day.



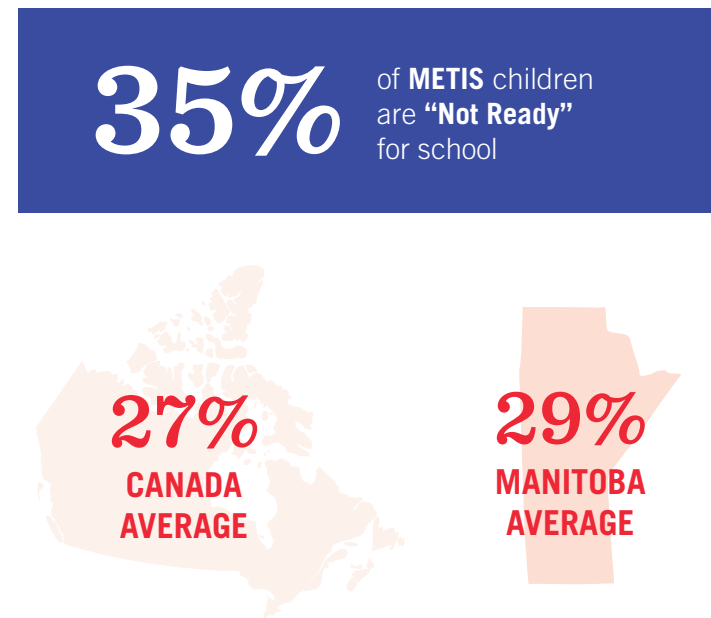
Social Competence

Children play and get along with others, share, and show self-confidence.



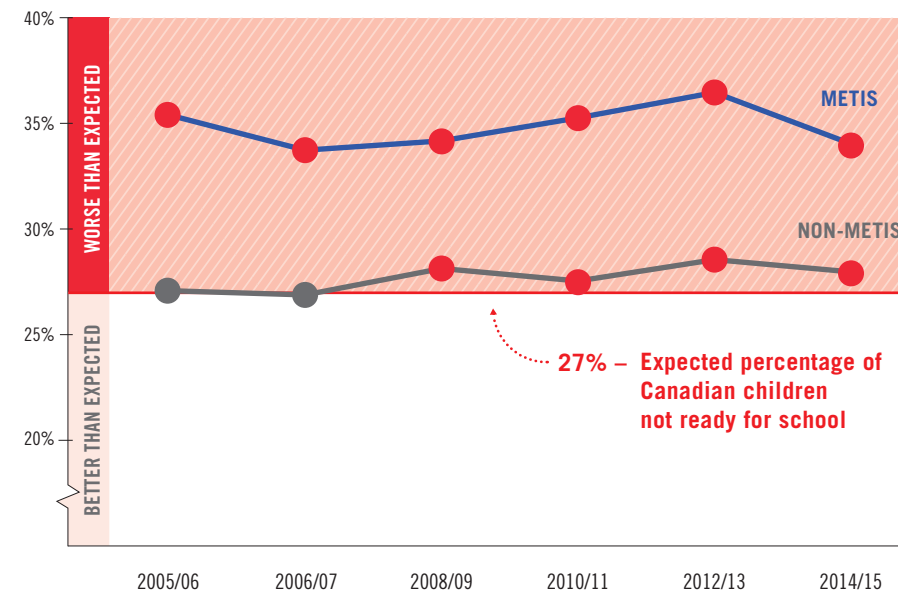
“Not Ready”

Classified as **not ready** in a domain if a child's score is below the 10th percentile (based on Canadian norms)



Change Over Time

% of Metis and Non-Metis children **not ready** for school in at least one EDI domain over time



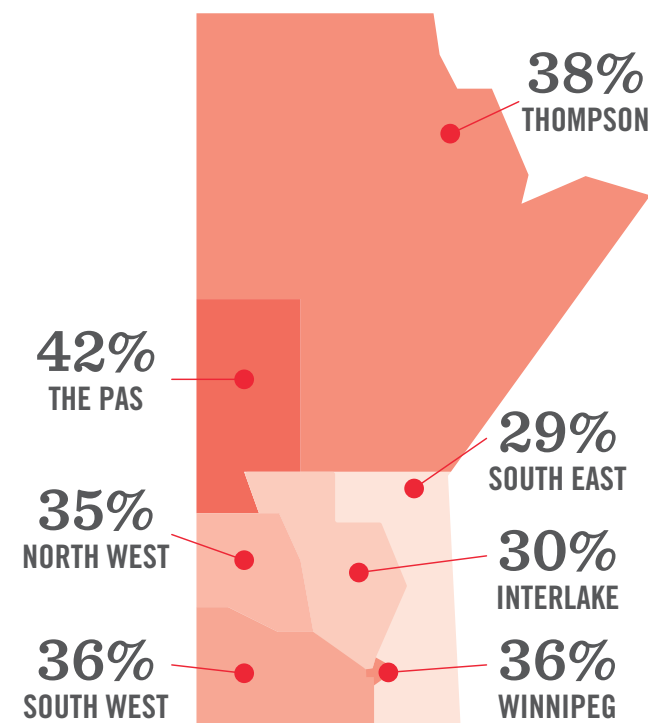
Metis Vs Non-Metis

% of the Metis and non-Metis children **not ready** on each of the five EDI domains

NON-METIS Not Ready		METIS Not Ready
10.4%		12.1%
11.6%		14.6%
11.6%		16.4%
12.9%		16.8%
10.5%		14.0%

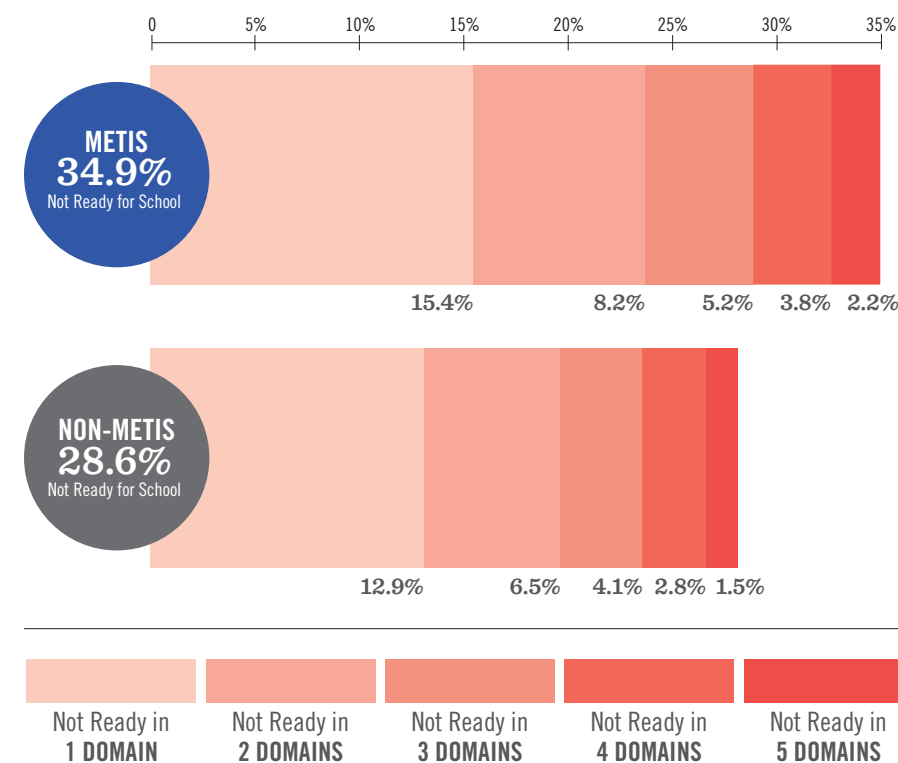
Not Ready by MMF Regions

% of Metis children **not ready** in at least one domain by region



Number of Domains “Not Ready”

% of Metis and non-Metis children **not ready** in more than one domain



Summary

While Manitoba children generally fare poorer than the rest of Canada with respect to EDI scores, Metis children fared worse in not being prepared for school than other children in the province with over a 1/3 of Metis children not prepared. A higher percentage of Metis children were not ready in each of the five domains compared to children who were not Metis. Also, a higher percentage of Metis children were not ready in multiple domains.

Children from lower income neighbourhoods are more likely to be **not ready**

The Pas and Thompson regions had higher percentages of children **not ready** for school