

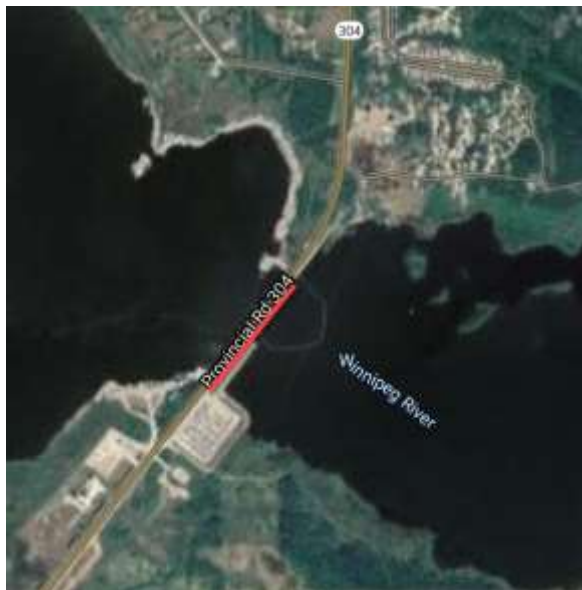
August 08, 2025

Single lane closure on Provincial Road 304 at the Pine Falls Generating Station from August 21 to mid-November 2025.

Starting Thursday, August 21, 2025, Manitoba Hydro will be on site at the Pine Falls Generating Station conducting work impacting the section of Provincial Road (PR) 304 passing over the Pine Falls Generating Station, which will be temporarily reduced to one lane (see map below). This is necessary to accommodate Manitoba Hydro's installation of post-tensioned anchors in the spillway piers which is required to meet new safety guidelines set out by the Canadian Dam Association.

During this project there will be a few short periods of overnight full road closures, more details will be shared on these full closures when the dates and times are confirmed.

The area will be marked with signage and temporary traffic lights will be installed to direct traffic. Emergency vehicles will be allowed through the area with no delays. There will be no power interruptions or water level changes because of this work.



[Learn more about
Pine Falls Generating
Station](#)

Manitoba Hydro apologizes in advance for any inconveniences. If you have any questions or concerns, please e-mail rayclark@hydro.mb.ca.