

2026 04 30

## NOTICE OF OPERATING PLAN FORECAST - **BURNTWOOD RIVER FLOW**

On May 1, 2026 the Burntwood River flow is forecasted to be 230 cubic feet per second (cfs). The flow is expected to gradually increase to 4,100 cfs by the third week of the month and then gradually decrease to 3,100 cfs by the end of May.

During the month of June the flow is expected to gradually decrease to 1,900 cfs by the end of the month.

**Distribution List:**

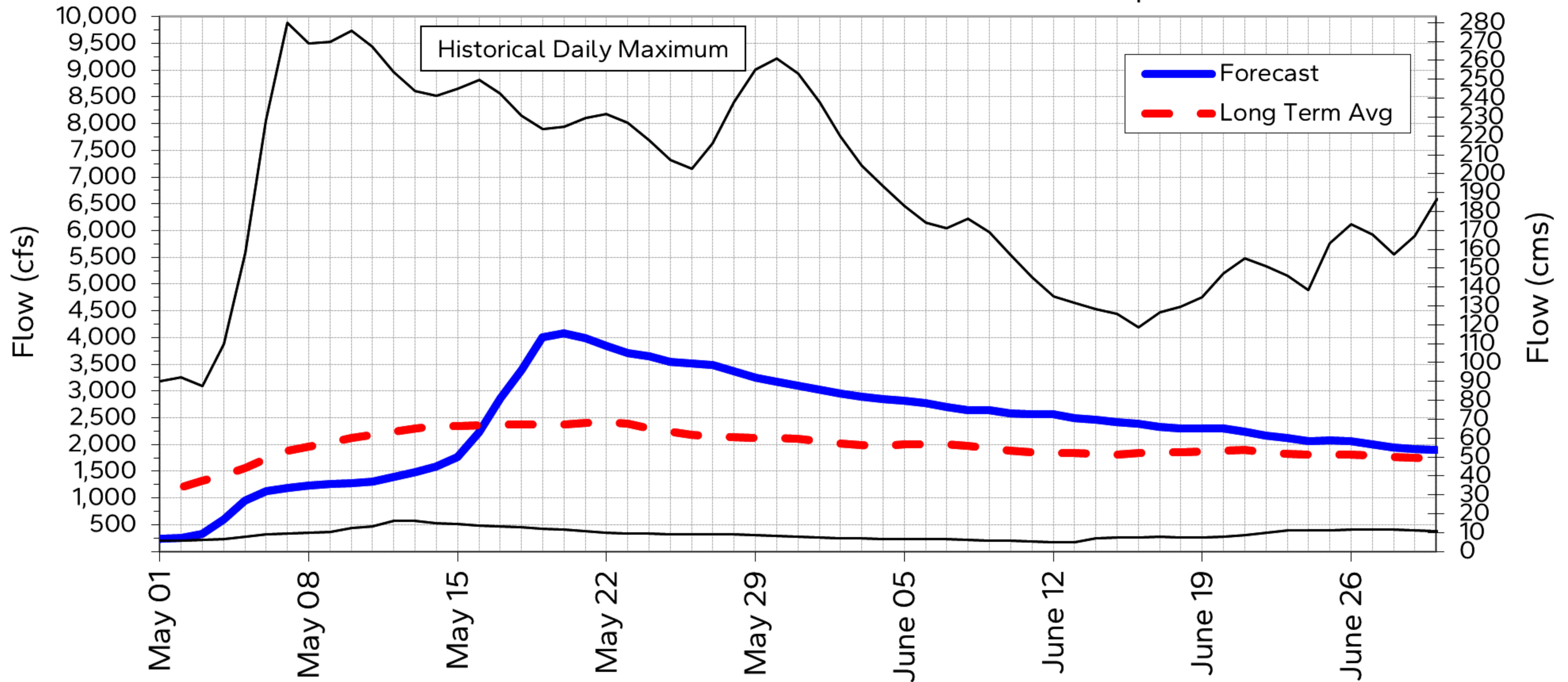
CHIEF, Tataskweyak Cree Nation, Split Lake

CHIEF, War Lake First Nation, Ilford

Manitoba Métis Federation, Winnipeg

Regional Director General, Manitoba Region, Indigenous Services Canada

BURNTWOOD RIVER FLOW 60 Day Flow Forecast May 1, 2026 to Jun 30, 2026  
 Station: 05TE002 Burntwood River above Leaf Rapids



Notes:

- Based on Manitoba Hydro Forecast dated: Apr 30, 2026
- Period of Record: Aug/85 to Present
- Historical daily minimum & maximum flows pertain to the period of record above
- Conversion: 1 cms = 35.31 cfs

2026 04 30

## NOTICE OF OPERATING PLAN FORECAST - **CEDAR LAKE**

On May 1, 2026 the level of Cedar Lake is forecasted to be 836.6 feet. The level of the lake is expected to rise 2 feet 9 inches to elevation 839.3 feet by the end of May.

During the month of June the level of the lake is expected to rise 1 foot 6 inches to elevation 840.9 feet by the end of the month.

For water level and flow information including near real-time water levels and 14-day forecast estimates, please visit Manitoba Hydro's website at [www.hydro.mb.ca/waterlevels](http://www.hydro.mb.ca/waterlevels)

### **Distribution List:**

CHIEF, Mispawistik Cree Nation

MAYOR, Easterville Community Council

MAYOR, Town of Grand Rapids

Cormorant Community Council, Chief Administration Officer, Cormorant

Opaskwayak Commercial Fishermens Coop, R. Lavallee, The Pas

Opaskwayak Cree Nation, Lands Authority Branch

Opaskwayak Cree Nation, Natural Resource

Manitoba Métis Federation, Winnipeg

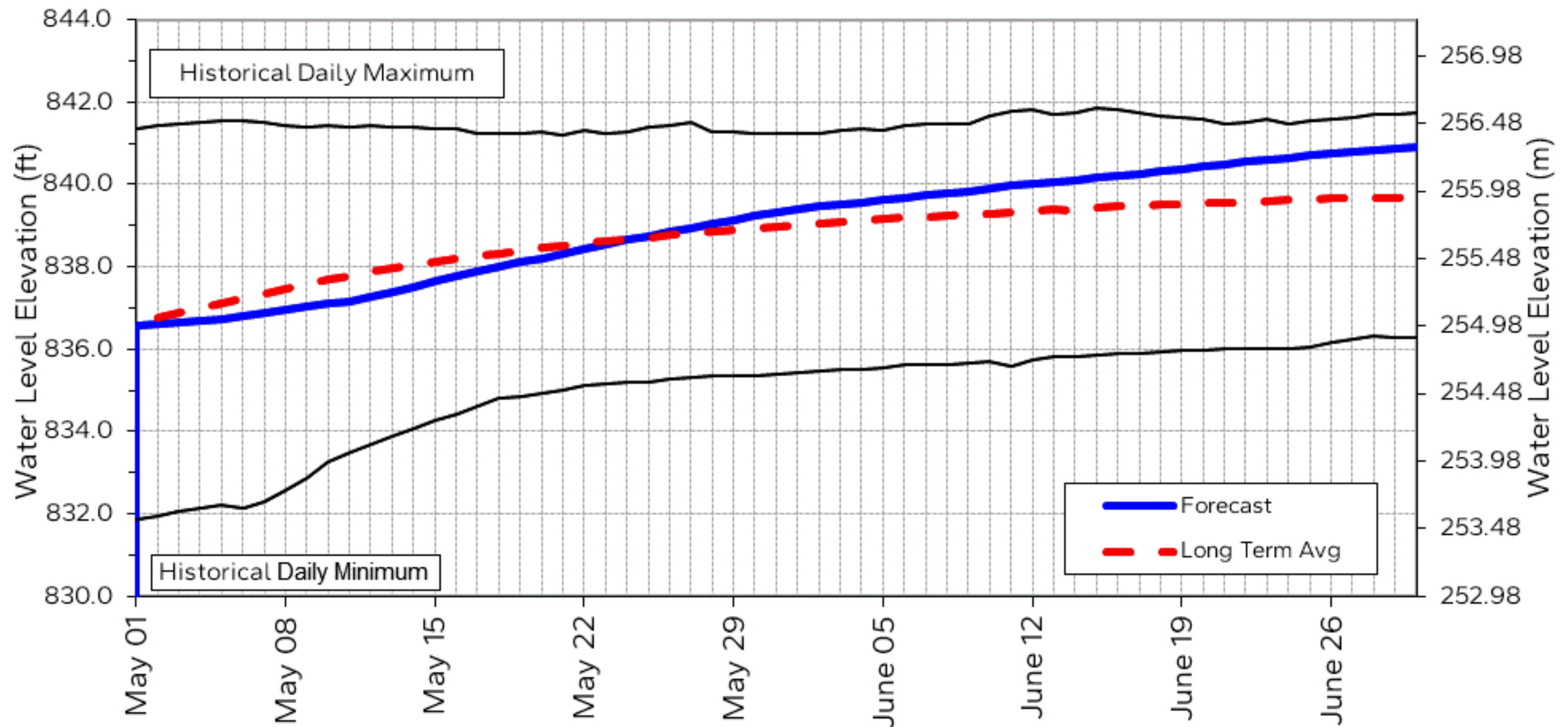
Moose Lake Resources Management Board (RMB)

Regional Director General, Manitoba Region, Indigenous Services Canada

CBC North Country Radio for broadcast in Cree & English @ 8:30 AM & 12:30 PM for 4 consecutive days from receipt

# CEDAR LAKE 60 Day Water Level Forecast May 1, 2026 to June 30, 2026

Station: 05KL005 Cedar Lake near Oleson Point



## Notes:

- Based on Manitoba Hydro Forecast dated: April 30, 2026
- Period of Record: Apr/77 to Present
- Historical daily minimum & maximum water levels pertain to the period of record above
- Conversion: 1 foot = 0.3048 metres

**Please post this graph in a conspicuous location for residents' reference.**

2026 04 30

## NOTICE OF OPERATING PLAN FORECAST - **CROSS LAKE**

On May 1, 2026 the level of Cross Lake is forecasted to be 679.6 feet. The level of the lake is expected to fall 2 inches to elevation 679.4 feet by the end of May.

During the month of June the level of the lake is expected to fall 3 inches to elevation 679.1 feet by the first week of the month and then rise 1 foot 2 inches to elevation 680.3 feet by the end of the month.

For water level and flow information including near real-time water levels and 7-day forecast estimates, please visit Manitoba Hydro's website at [www.hydro.mb.ca/waterlevels](http://www.hydro.mb.ca/waterlevels)

**Distribution List:**

CHIEF, Cross Lake First Nation

MAYOR, Cross Lake Community Council

Communications Officer, Pimicikamak Cree Nation

Manitoba Métis Federation, Winnipeg

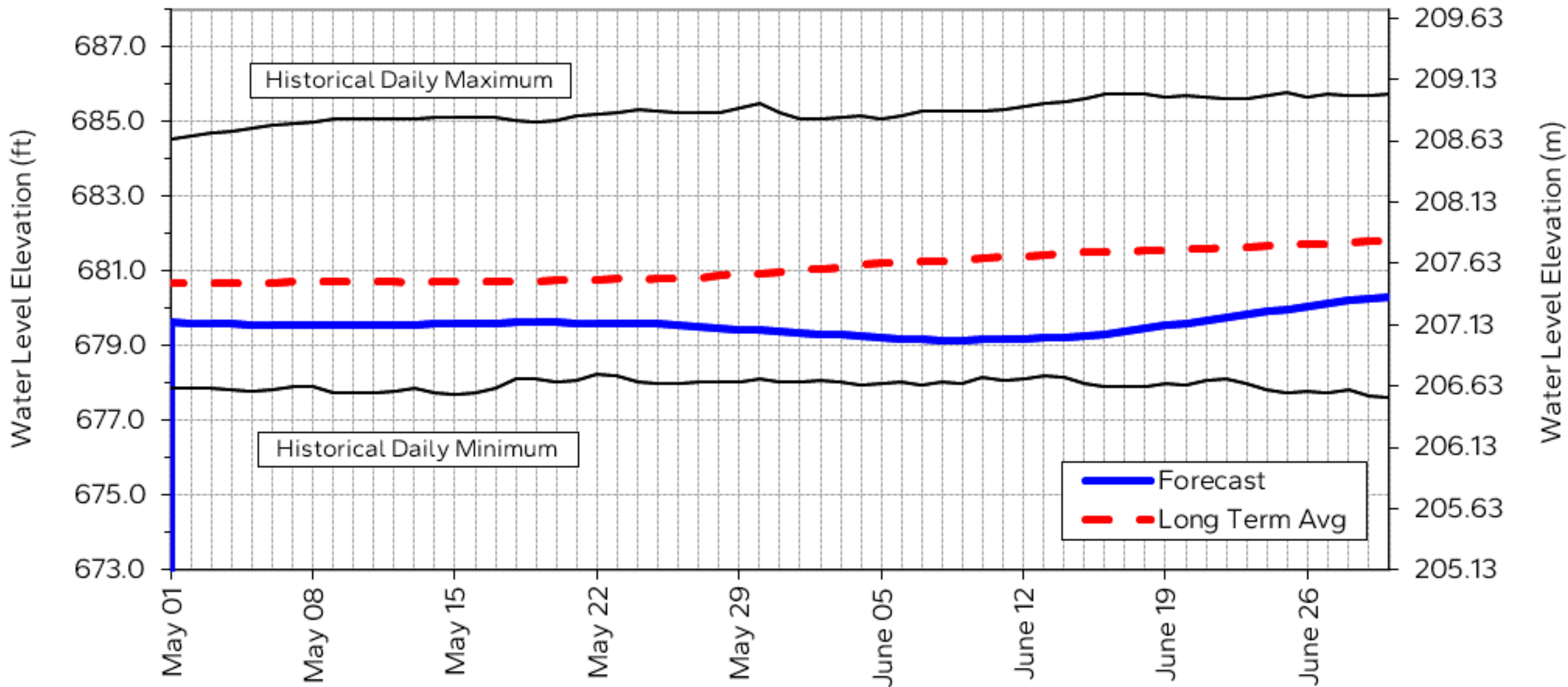
Regional Director General, Manitoba Region, Indigenous Services Canada

CBC North Country Radio for broadcast as Community Service Announcement

Arctic Radio CHTM Thompson for broadcast in Cree & English @ 7:00 PM & 8:30 PM for 4 consecutive days from receipt

CFNC Cross Lake Radio for broadcast in Cree & English @ 12:30 PM & 6:30 PM for 4 consecutive days from receipt

CROSS LAKE 60 Day Water Level Forecast May 1, 2026 to June 30, 2026  
 Station: 05UD001 Cross Lake @ Cross Lake



Notes:

- Based on Manitoba Hydro Forecast dated: Apr 30, 2026
- Period of Record: Apr/92 to Present
- Historical daily minimum & maximum water levels pertain to the period of record above
- Conversion: 1 foot = 0.3048 metres

Please post this graph in a conspicuous location for residents' reference.



2026 04 30

## NOTICE OF OPERATING PLAN

### FORECAST - **FOOTPRINT LAKE**

On May 1, 2026 the level of Footprint Lake is forecasted to be 794.2 feet. The level of the lake is expected to rise 2 feet 9 inches to elevation 796.9 feet by the end of May.

During the month of June the level of the lake is expected to rise 2 feet 3 inches to elevation 799.2 feet by the end of the month.

For water level and flow information including near real-time water levels and 14-day forecast estimates, please visit Manitoba Hydro's website at [www.hydro.mb.ca/waterlevels](http://www.hydro.mb.ca/waterlevels)

#### **Distribution List:**

CHIEF, Nisichawayasihk Cree Nation, Nelson House

MAYOR, Nelson House Community Council

Manitoba Métis Federation, Winnipeg

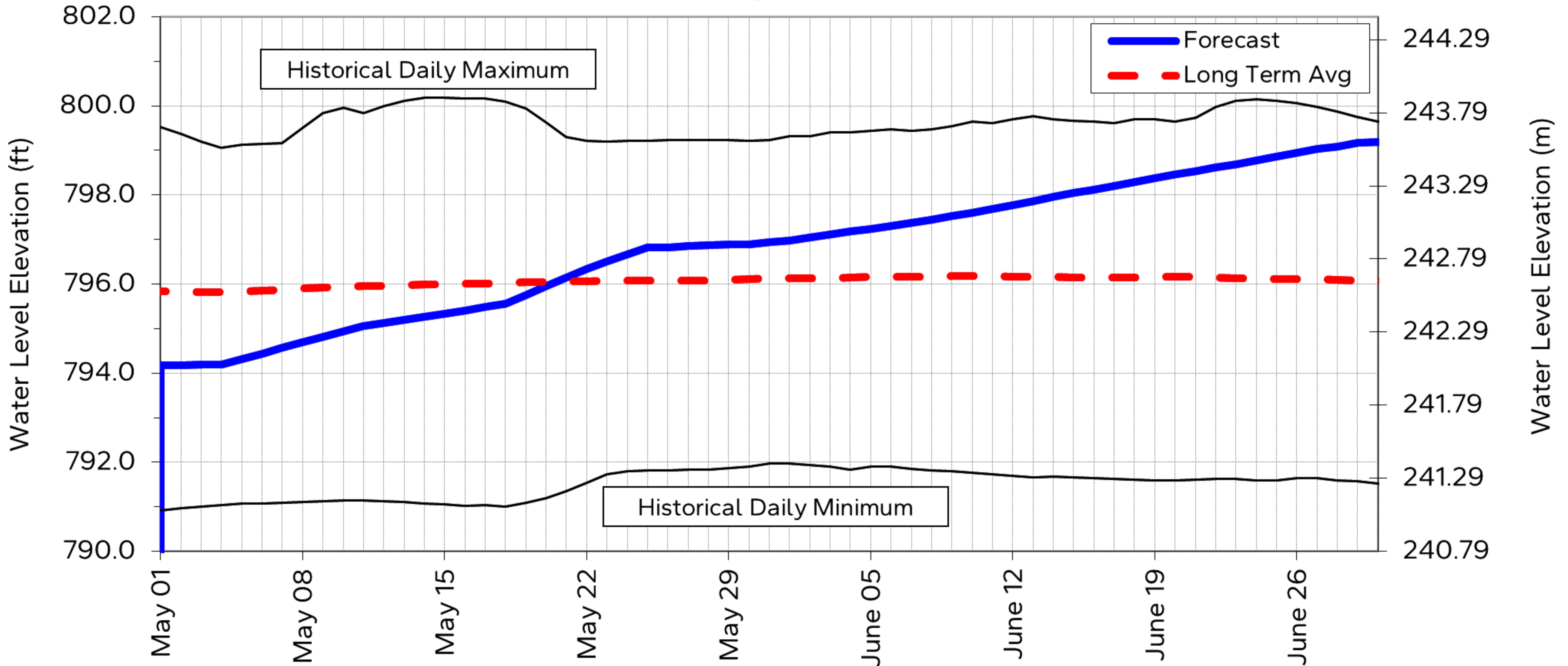
Regional Director General, Manitoba Region, Indigenous Services Canada

CBC North Country Radio for broadcast as Community Service Announcement

Arctic Radio CHTM Thompson for broadcast in Cree & English @ 7:00 PM & 8:30 PM for 4 consecutive days from

NCN Achimowin TV/Radio Communications for broadcast in Cree & English for 4 consecutive days from receipt

FOOTPRINT LAKE 60 Day Water Level Forecast May 1, 2026 to Jun 30, 2026  
 Station: 05TF001 Footprint Lake @ Nelson House



Notes:

- Based on Manitoba Hydro Forecast dated: Apr 30, 2026
- Period of Record: Sep/77 to Present
- Historical daily minimum & maximum water levels pertain to the period of record above
- Conversion: 1 foot = 0.3048 metres



Please post this graph in a conspicuous location for residents' reference.

2026 04 30

## NOTICE OF OPERATING PLAN FORECAST - **GRASS RIVER FLOW**

On May 1, 2026 the Grass River flow is forecasted to be 870 cubic feet per second (cfs). The flow is expected to gradually increase to 1,900 cfs by the third week of the month.

During the month of June the flow is expected to gradually increase to 3,000 cfs by the end of the month.

**Distribution List:**

CHIEF, Tataskweyak Cree Nation, Split Lake

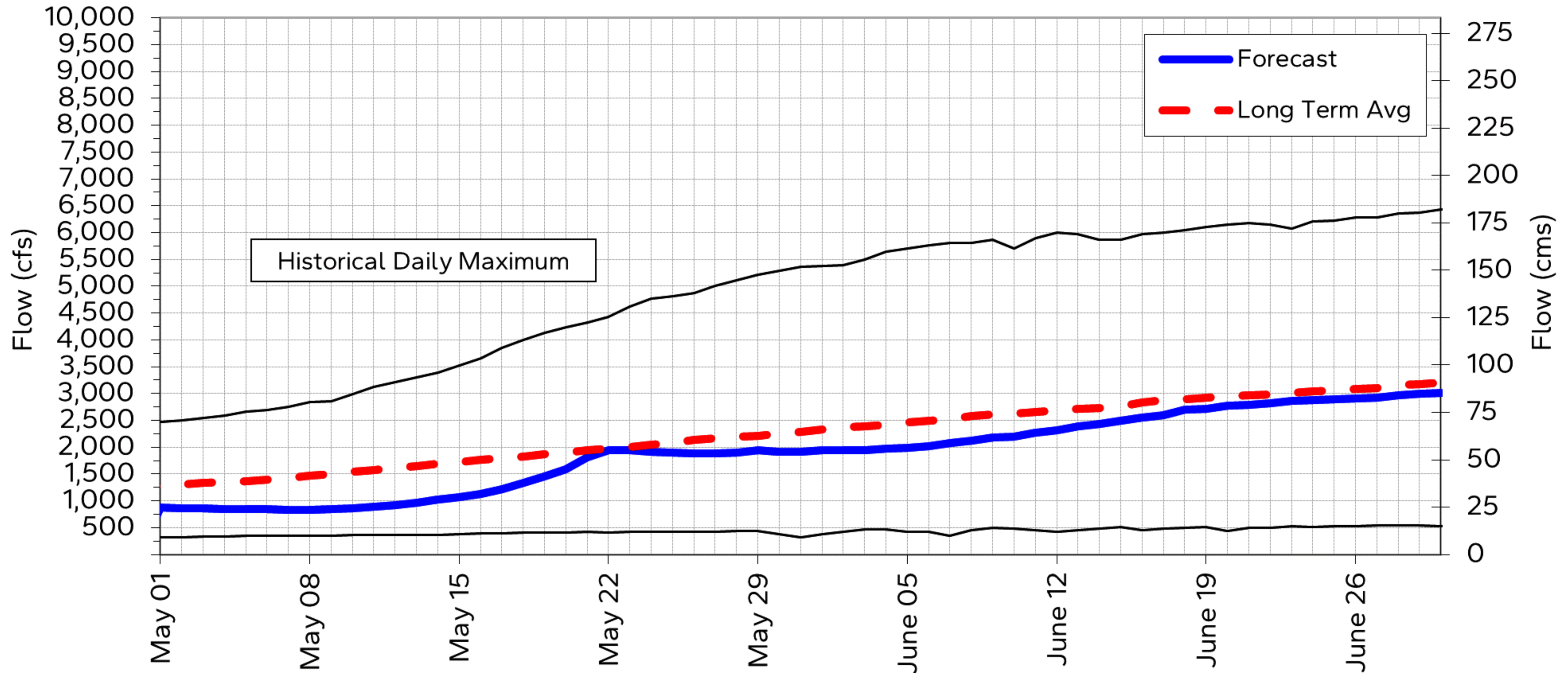
CHIEF, War Lake First Nation, Ilford

Manitoba Métis Federation, Winnipeg

Regional Director General, Manitoba Region, Indigenous Services Canada

# GRASS RIVER FLOW 60 Day Flow Forecast May 1, 2026 to Jun 30, 2026

## Station: 05TD001 Grass River above Standing Stone Falls



**Notes:**

- Based on Manitoba Hydro Forecast dated: Apr 30, 2026
- Period of Record: Apr/77 to Present
- Historical daily minimum & maximum water flows pertain to the period of record above
- Conversion: 1 cms = 35.31 cfs



2026 04 30

## NOTICE OF OPERATING PLAN FORECAST - **GUNISAO RIVER FLOW**

On May 1, 2026 the Gunisao River flow is forecasted to be 330 cubic feet per second (cfs). The flow is expected to gradually increase to 2,400 cfs by the third week of the month and then gradually decrease to 2,200 cfs by the end of May.

During the month of June the flow is expected to gradually decrease to 1,400 cfs by the end of the month.

**Distribution List:**

CHIEF, Tataskweyak Cree Nation, Split Lake

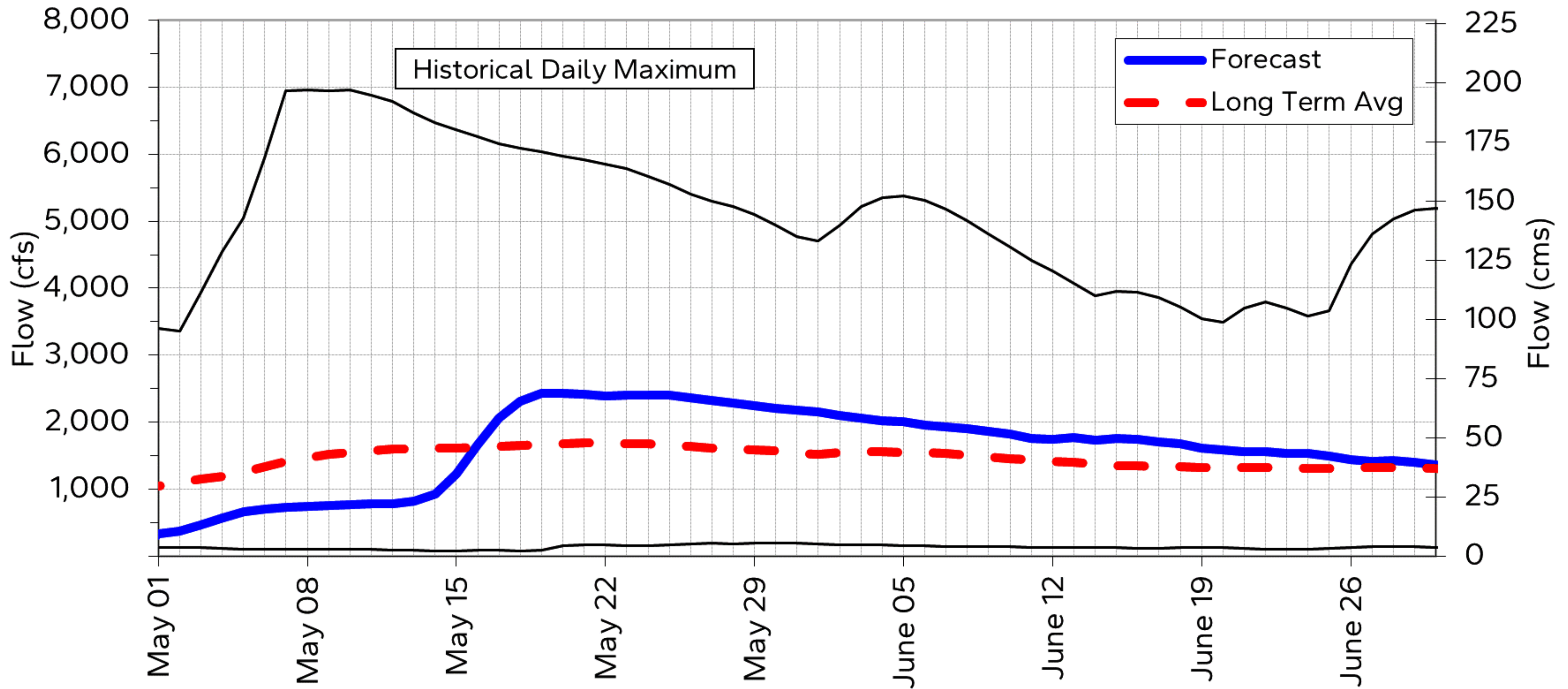
CHIEF, War Lake First Nation, Ilford

Manitoba Métis Federation, Winnipeg

Regional Director General, Manitoba Region, Indigenous Services Canada

# GUNISAO RIVER FLOW 60 Day Flow Forecast May 1, 2026 to June 30, 2026

## Station: 05UA003 Gunisao River @ Jam Rapids



**Notes:**

- Based on Manitoba Hydro Forecast dated: Apr 30, 2026
- Period of Record: Apr/77 to Present
- Historical daily minimum & maximum flows pertain to the period of record



2026 04 30

## NOTICE OF OPERATING PLAN FORECAST - **KELSEY FOREBAY**

On May 1, 2026 the level of Kelsey Forebay on the Nelson River is forecasted to be 603.4 feet. The forebay level is expected to rise 1 foot 5 inches to elevation 604.8 feet by the third week of the month and then remain fairly constant near elevation 604.8 feet until the end of May.

During the month of June the forebay level is expected to remain fairly constant near elevation 604.8 feet.

For water level and flow information including near real-time water levels and 14-day forecast estimates, please visit Manitoba Hydro's website at [www.hydro.mb.ca/waterlevels](http://www.hydro.mb.ca/waterlevels)

**Distribution List:**

CHIEF, Tataskweyak Cree Nation, Split Lake

CHIEF, Cross Lake First Nation

CHIEF, War Lake First Nation, Ilford

MAYOR, Cross Lake Community Council

MAYOR, Pikwitonei Community Council

MAYOR, Thicket Portage Community Council

Split Lake Trappers Assoc, E. Flett, Split Lake

Tataskweyak Trust Mgr, Split Lake

Manitoba Métis Federation, Winnipeg

Regional Director General, Manitoba Region, Indigenous Services Canada

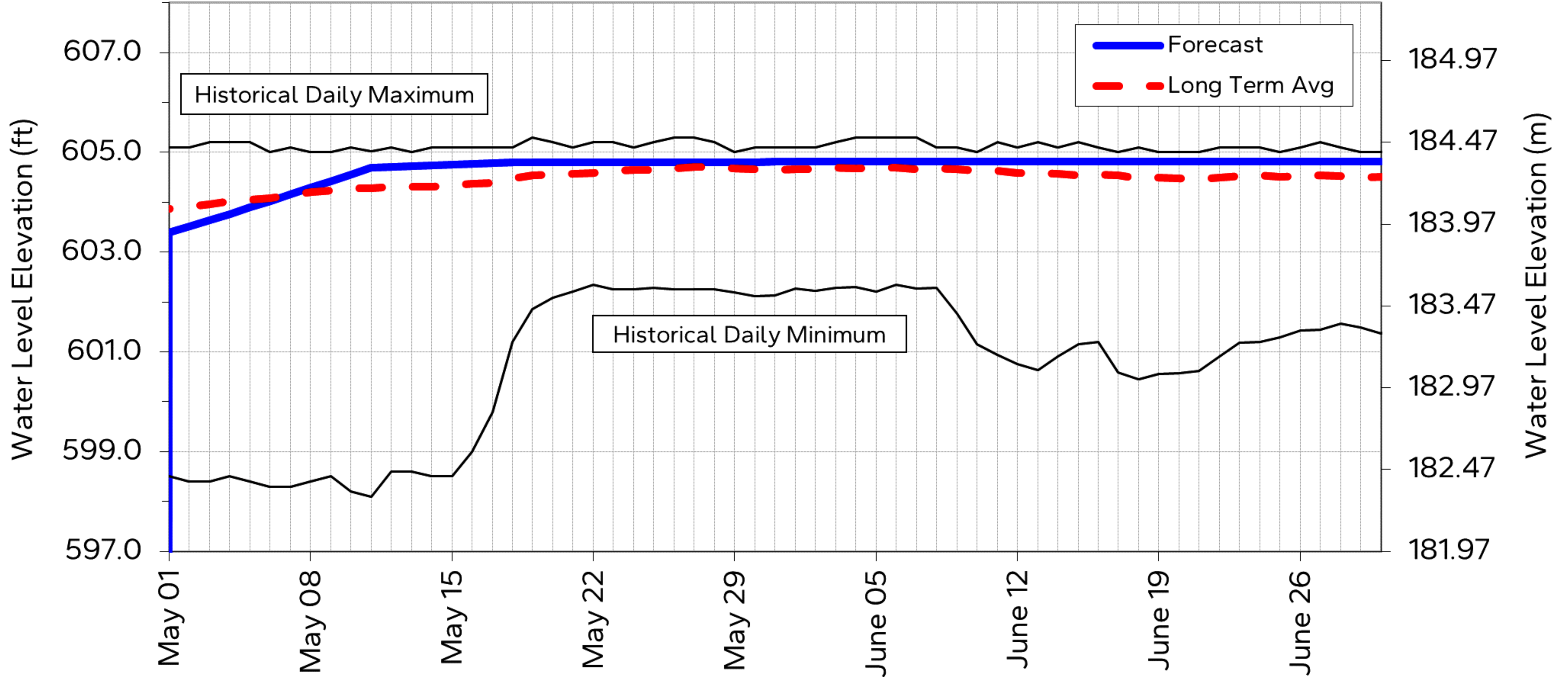
CBC North Country Radio for broadcast as Community Service Announcement

Arctic Radio CHTM Thompson for broadcast in Cree & English @ 7:00 PM & 8:30 PM for 4 consecutive days from

CJKD Split Lake Radio for broadcast in Cree & English twice daily for 4 consecutive days from receipt

# KELSEY FOREBAY 60 Day Water Level Forecast May 1, 2026 to Jun 30, 2026

## Station: Kelsey Generating Station



**Notes:**

- Based on Manitoba Hydro Forecast dated: Apr 30, 2026
- Period of Record: Sep/77 to Present
- Historical daily minimum & maximum water levels pertain to the period of record above
- Conversion: 1 foot = 0.3048 metres

**Please post this graph in a conspicuous location for residents' reference.**



---

2026 04 30

## NOTICE OF OPERATING PLAN FORECAST - **KELSEY OUTFLOWS**

On May 1, 2026 the outflow from Kelsey G.S. is forecasted to be 61,900 cubic feet per second (cfs). The outflow is expected to be decreased on May 4 to 58,600 cfs and increased on May 18 to 62,300 cfs. The outflow is then expected to gradually increase to 64,700 cfs by the end of May.

During the month of June the outflow is expected to gradually decrease to 60,800 cfs by the second week of the month, then be increased on June 22 to 65,800 cfs and increased on June 29 to 72,300 cfs.

**Distribution List:**

CHIEF, Tataskweyak Cree Nation, Split Lake

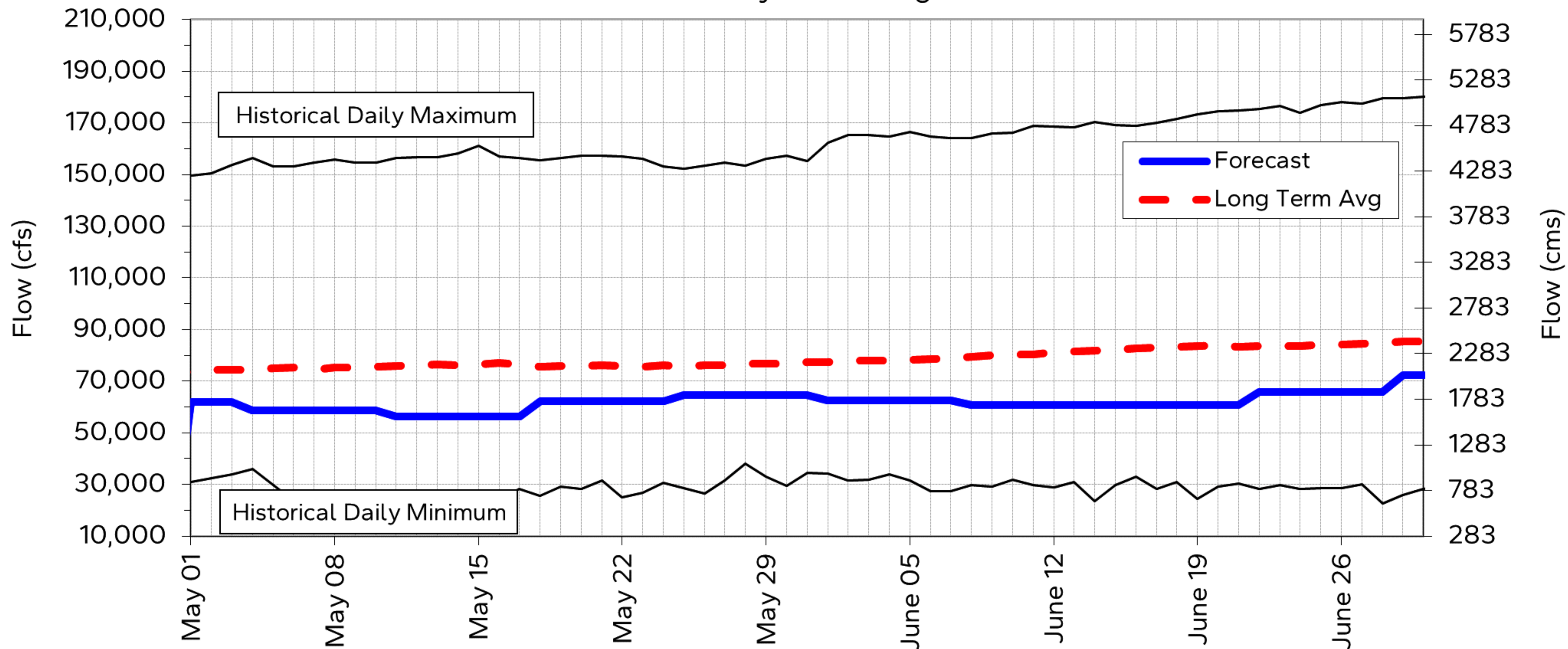
CHIEF, War Lake First Nation, Ilford

Manitoba Métis Federation, Winnipeg

Regional Director General, Manitoba Region, Indigenous Services Canada

## KELSEY OUTFLOWS 60 Day Flow Forecast May 1, 2026 to Jun 30, 2026

### Station: Kelsey Generating Station



- Notes:
- Based on Manitoba Hydro Forecast dated: Apr 30, 2026
  - Period of Record: Apr/77 to Present
  - Historical daily minimum & maximum flows pertain to the period of record above



2026 04 30

## NOTICE OF OPERATING PLAN FORECAST - **KETTLE OUTFLOWS**

On May 1, 2026 the outflow from Kettle G.S. is forecasted to be 90,170 cubic feet per second (cfs). The outflow is expected to gradually increase to 90,400 cfs by the second week of the month, be increased on May 18 to 100,500 cfs and increased on May 25 to 123,900 cfs.

During the month of June the outflow is expected to be decreased on June 8 to 118,900 cfs and increased on June 29 to 122,800 cfs.

**Distribution List:**

CHIEF, Tataskweyak Cree Nation, Split Lake

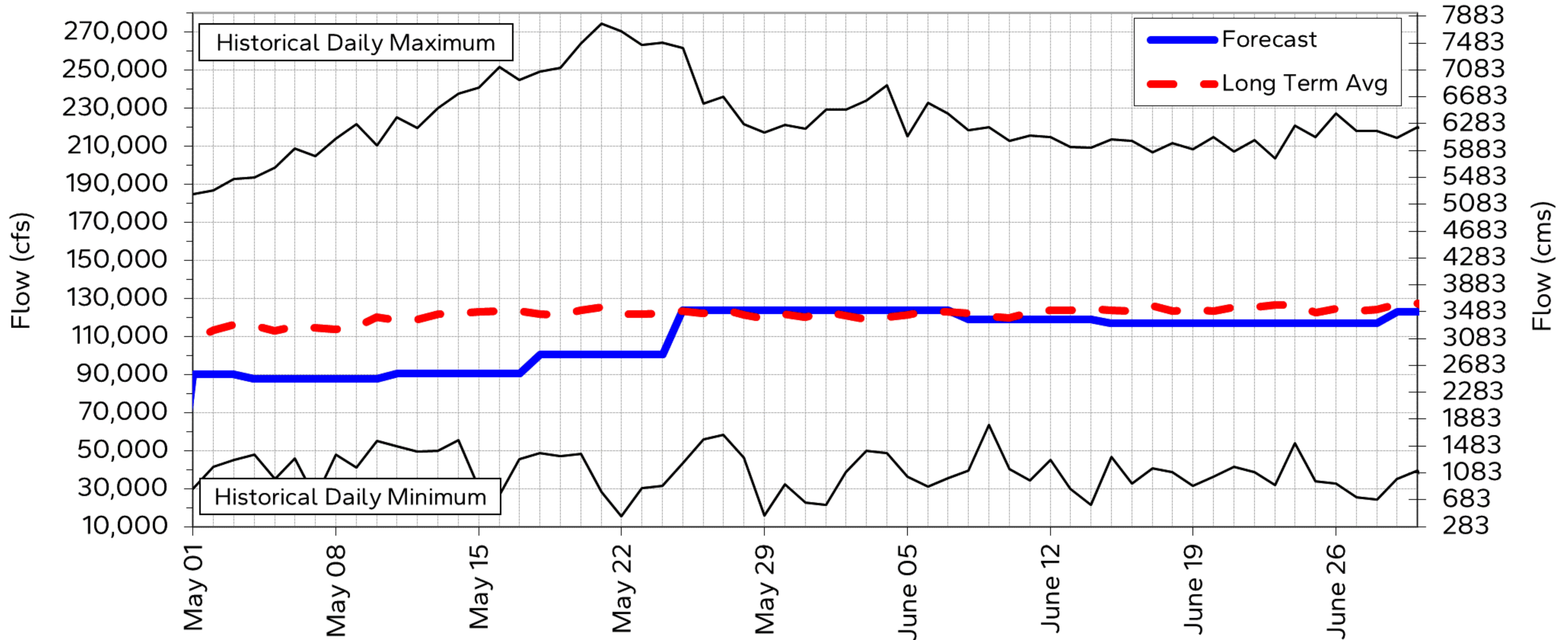
CHIEF, War Lake First Nation, Ilford

Manitoba Métis Federation, Winnipeg

Regional Director General, Manitoba Region, Indigenous Services Canada

# KETTLE OUTFLOWS 60 Day Flow Forecast May 1, 2026 to Jun 30, 2026

## Station: Kettle Generating Station



**Notes:**

- Based on Manitoba Hydro Forecast dated: Apr 30, 2026
- Period of Record: Apr/77 to Present
- Historical daily minimum & maximum flows pertain to the period of record above
- Conversion: 1 cms = 35.31 cfs

2026 04 30

## NOTICE OF OPERATING PLAN FORECAST - **SOUTH MOOSE LAKE**

On May 1, 2026 the level of South Moose Lake is forecasted to be 839.8 feet. The level of the lake is expected to rise 2 inches to elevation 839.9 feet by the end of May.

During the month of June the level of the lake is expected to remain fairly constant near elevation 840.0 feet.

For water level and flow information including near real-time water levels and 14-day forecast estimates, please visit Manitoba Hydro's website at [www.hydro.mb.ca/waterlevels](http://www.hydro.mb.ca/waterlevels)

**Distribution List:**

CHIEF, Mosakahiken Cree Nation, South Moose Lake

MAYOR, Moose Lake Community Council

Cormorant Community Council, Chief Administration Officer, Cormorant

Manitoba Métis Federation, Winnipeg

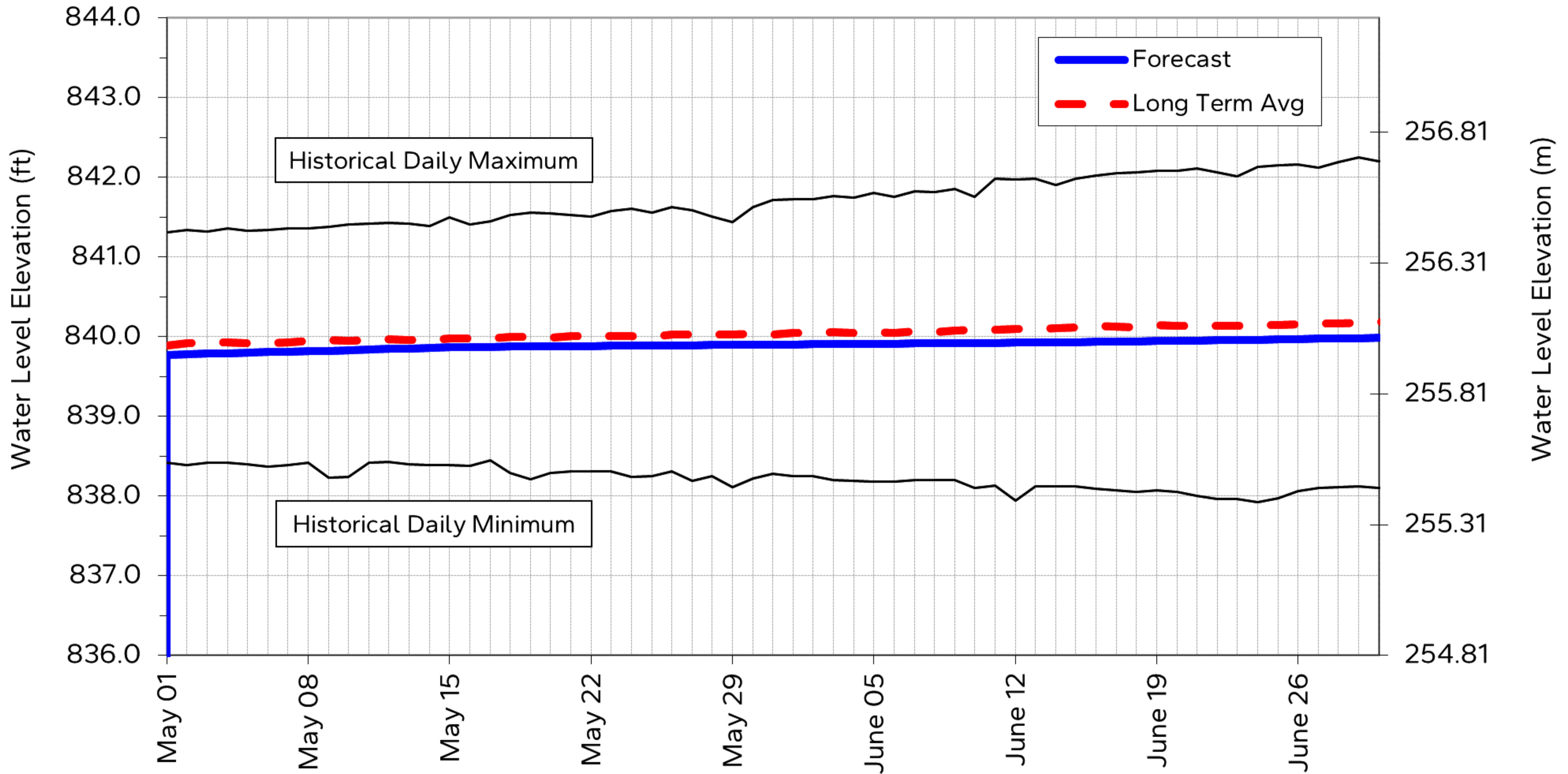
Moose Lake Resources Management Board (RMB)

Regional Director General, Manitoba Region, Indigenous Services Canada

CBC North Country Radio for broadcast as Community Service Announcement

Arctic Radio CJAR The Pas for broadcast in Cree & English @ 6:00 PM for 4 consecutive days from receipt (via CHTM for translation)

SOUTH MOOSE LAKE 60 Day Water Level Forecast May 1, 2026 to Jun 30, 2026  
 Station: 05KK006 South Moose Lake @ Moose Lake Narrows



Notes:

- Based on Manitoba Hydro Forecast dated: April 30, 2026
- Period of Record: Apr/77 to Present
- Historical daily minimum & maximum water levels pertain to the period of record above
- Conversion: 1 foot = 0.3048 metres

Please post this graph in a conspicuous location for residents' reference.



---

2026 04 30

## NOTICE OF OPERATING PLAN FORECAST - **MISSI FALLS**

On May 1, 2026 the outflows from Missi Falls control structure are forecasted to be 1,790 cubic feet per second (cfs). The outflows are expected to be decreased on May 18 to 750 cfs.

During the month of June, the outflows are expected to be increased on June 22 to 2,100 cfs and decreased on June 29 to 750 cfs.

For water level and flow information including near real-time water levels and 7-day forecast estimates, please visit Manitoba Hydro's website at [www.hydro.mb.ca/waterlevels](http://www.hydro.mb.ca/waterlevels)

**Distribution List:**

CHIEF, O-Pipon-Na-Piwin Cree Nation, South Indian Lake

CHIEF, York Factory First Nation, York Landing

CHIEF, War Lake First Nation, Ilford

CHIEF, Tataskweyak Cree Nation, Split Lake

MAYOR, Town of Churchill

SIL Trappers Association & SIL Fishermens Association, S. Ducharme, South Indian Lake

YFFN Director of Operations, York Landing

South Indian Lake Environmental Steering Committee, O-Pipon-Na-Piwin Cree Nation, South Indian Lake

Manitoba Métis Federation, Winnipeg

Regional Director General, Manitoba Region, Indigenous Services Canada

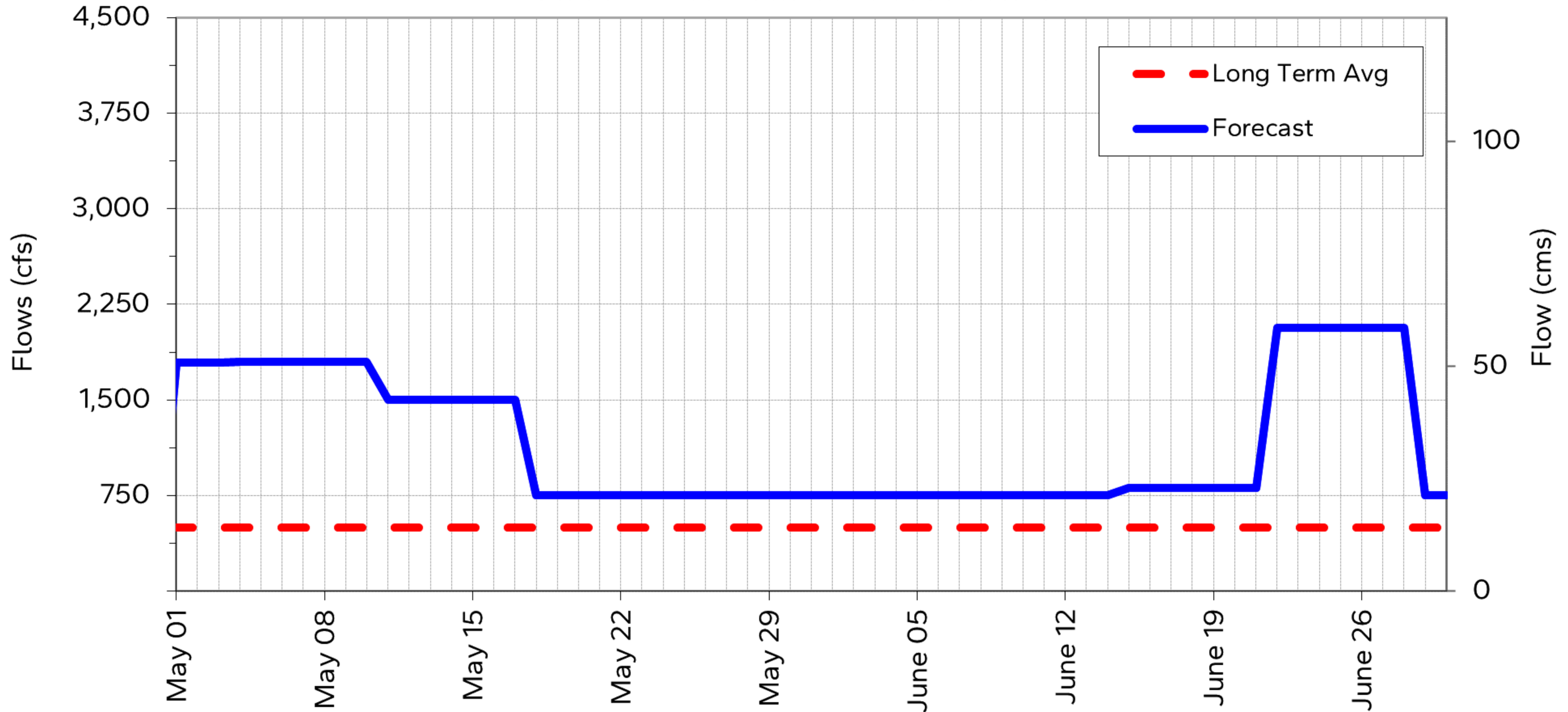
Arctic Radio CHTM Thompson for broadcast in Cree & English @ 7:00 PM & 8:30 PM for 4 consecutive days from receipt

CBC North Country Radio for broadcast in Cree & English @ 8:30 AM & 12:30 PM for 4 consecutive days from receipt

CHYL York Landing Radio for broadcast in Cree & English twice daily for 4 consecutive days from receipt

Radio station 101.9

MISSI FALLS OUTFLOWS 60 Day Flow Forecast May 1, 2026 to Jun 30, 2026  
 Station: Missi Falls Control Structure



Notes:

- Based on Manitoba Hydro Forecast dated: Apr 30, 2026
- Period of Record: Sep/77 to Present
- Conversion: 1 cms = 35.31 cfs



Please post this graph in a conspicuous location for residents' reference.

2026 04 30

## NOTICE OF OPERATING PLAN FORECAST - **LAKE WINNIPEG OUTFLOWS**

On May 1, 2026 the outflow from Lake Winnipeg is forecast to be 61,380 cubic feet per second (cfs). The outflow is expected to be decreased on May 18 to 58,300 cfs and decreased on May 25 to 54,000 cfs.

During the month of June the outflow is expected to be decreased on June 1 to 49,700 cfs, increased on June 8 to 53,200 cfs, increased on June 15 to 63,700 cfs and increased on June 22 to 73,900 cfs. The outflow is then expected to gradually increase to 76,600 cfs by the end of the month.

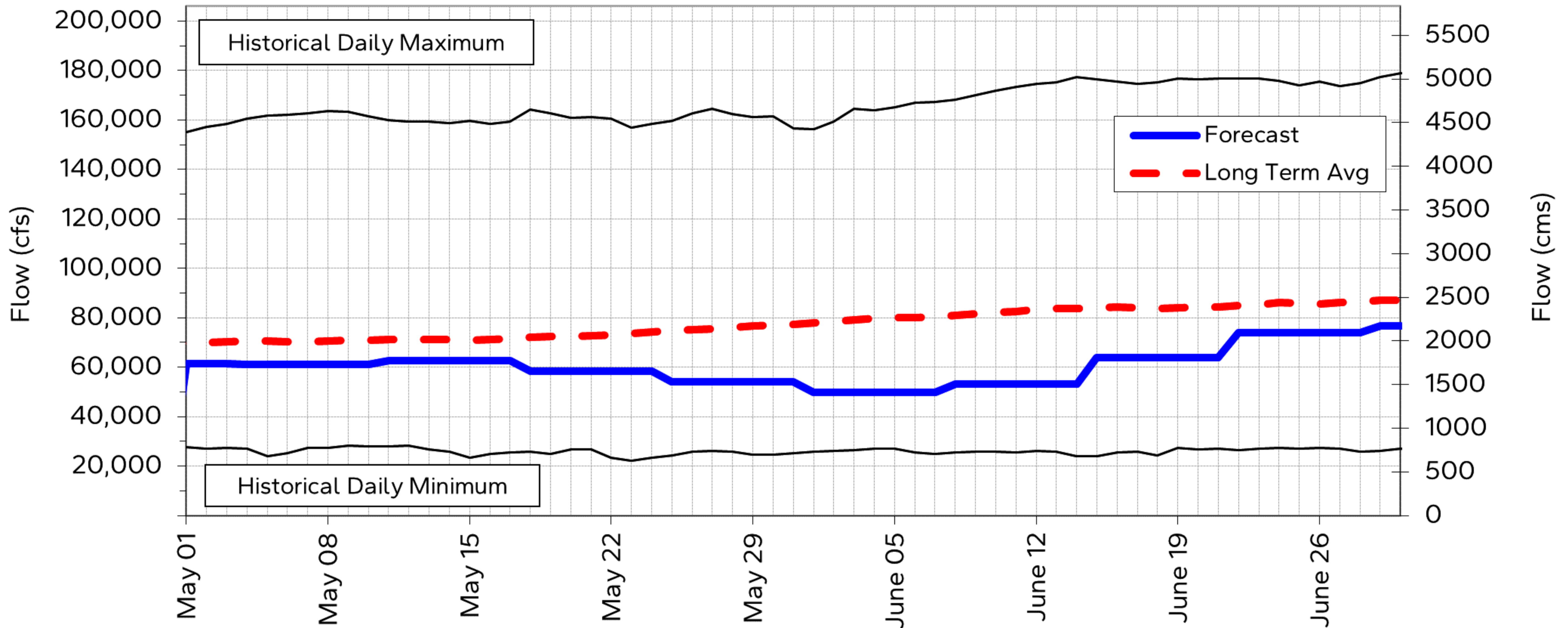
This information is also available from the Manitoba Hydro website at [www.hydro.mb.ca](http://www.hydro.mb.ca).

**Distribution List:**

CHIEF, Norway House Cree Nation  
MAYOR, Norway House Community Council  
CHIEF, Tataskweyak Cree Nation, Split Lake  
CHIEF, War Lake First Nation, Ilford  
Manager Keenanow Trust, Norway House Cree Nation  
Manitoba Métis Federation, Winnipeg  
Regional Director General, Manitoba Region, Indigenous Services Canada

# LAKE WINNIPEG OUTFLOWS 60 Day Flow Forecast May 1, 2026 to Jun 30, 2026

## Station: 05UB001 + Jenpeg Generating Station



**Notes:**

- Based on Manitoba Hydro Forecast dated: Apr 30, 2026
- Period of Record: Apr/77 to Present
- Historical daily minimum & maximum flows pertain to the period of record above
- Conversion: 1 cms = 35.31 cfs



2026 04 30

## NOTICE OF OPERATING PLAN FORECAST - **NOTIGI OUTFLOWS**

On May 1, 2026 the outflow from Notigi C.S. is forecasted to be 22,900 cubic feet per second (cfs). The outflow is expected to gradually increase to 24,600 cfs by the end of the month.

During the month of June the outflow is expected to gradually increase to 34,900 cfs by the end of the month.

**Distribution List:**

CHIEF, Tataskweyak Cree Nation, Split Lake

CHIEF, Nisichawayasihk Cree Nation

CHIEF, War Lake First Nation, Ilford

MAYOR, Nelson House Community Council

CHIEF, O-Pipon-Na-Piwin Cree Nation

SIL Trappers Association & SIL Fishermens Association, S. Ducharme, South Indian Lake

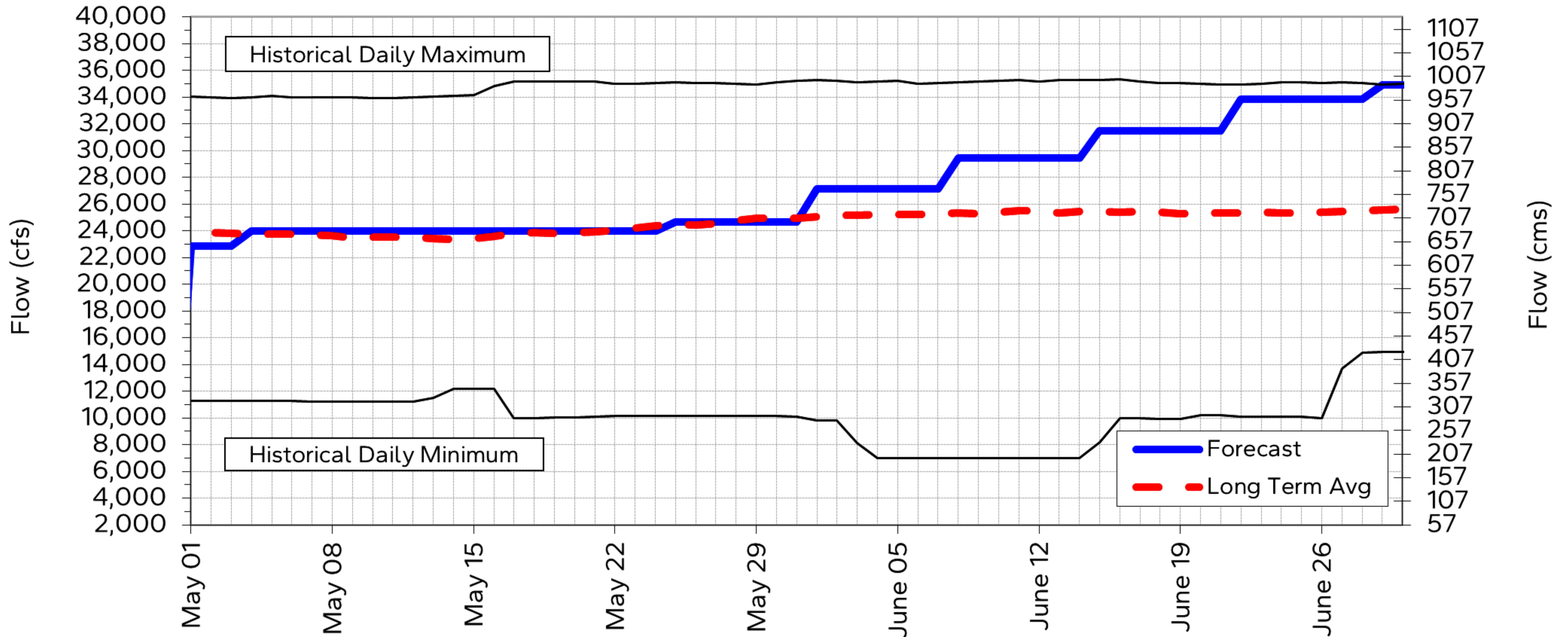
Manitoba Métis Federation, Winnipeg

Regional Director General, Manitoba Region, Indigenous Services Canada

NCN Achimowin TV/Radio Communications for broadcast in Cree & English for 4 consecutive days from

# NOTIGI OUTFLOWS 60 Day Flow Forecast May 1, 2026 to Jun 30, 2026

## Station: Notigi Control Structure



**Notes:**

- Based on Manitoba Hydro Forecast dated: Apr 30, 2026
- Period of Record: Apr/77 to Present
- Historical daily minimum & maximum flows pertain to the period of record above
- Conversion: 1 cms = 35.31 cfs

---

2026 04 30

## NOTICE OF OPERATING PLAN FORECAST - **ODEI RIVER FLOW**

On May 1, 2026 the Odei River flow is forecasted to be 150 cubic feet per second (cfs). The flow is expected to gradually increase to 3,700 cfs by the third week of the month, be increased on May 22 to 5,200 cfs, increased on May 23 to 6,600 cfs, increased on May 24 to 7,700 cfs, gradually increase to 8,700 cfs by the fourth week of the month and then gradually decrease to 8,200 cfs by the fourth week of the month.

During the month of June the flow is expected to gradually decrease to 3,200 cfs by the end of

**Distribution List:**

CHIEF, Tataskweyak Cree Nation, Split Lake

CHIEF, Nisichawayasihk Cree Nation

CHIEF, War Lake First Nation, Ilford

MAYOR, Nelson House Community Council

CHIEF, O-Pipon-Na-Piwin Cree Nation

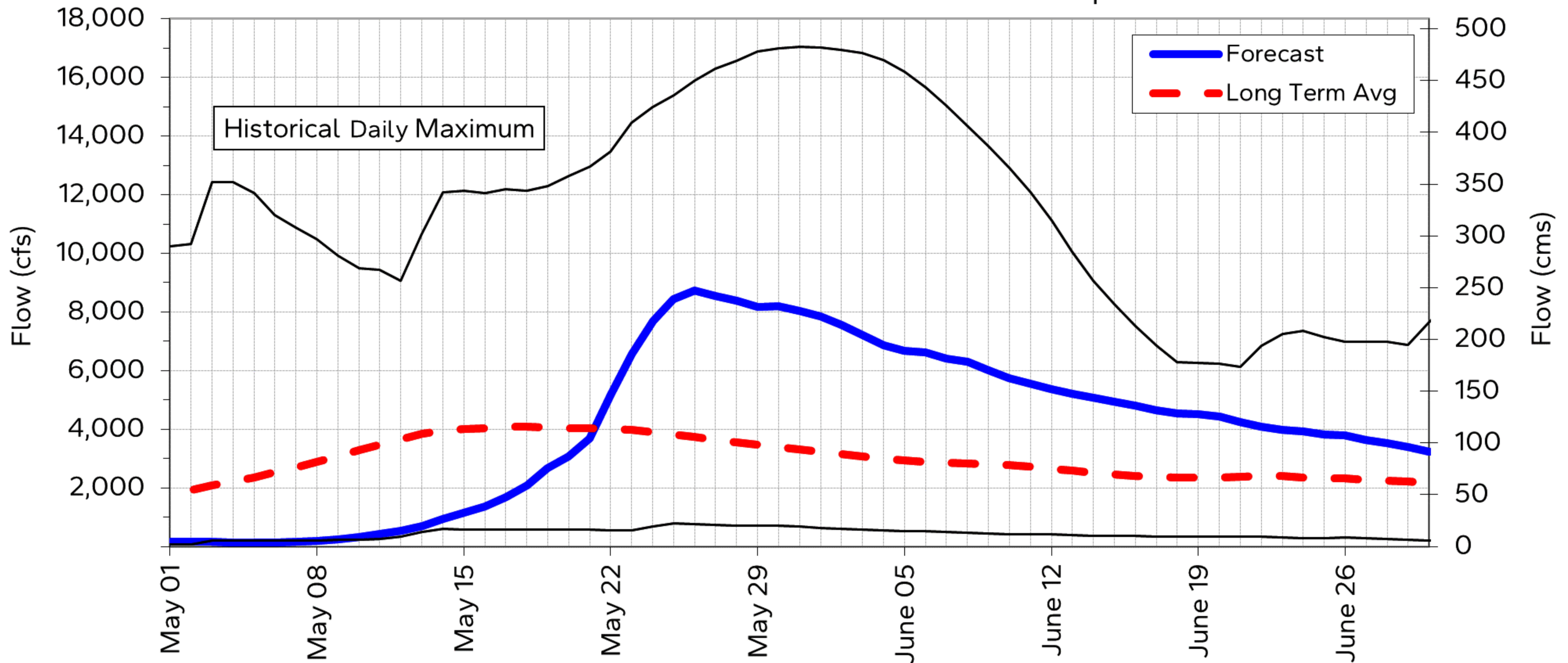
SIL Trappers Association & SIL Fishermens Association, S. Ducharme, South Indian Lake

Manitoba Métis Federation, Winnipeg

Regional Director General, Manitoba Region, Indigenous Services Canada

NCN Achimowin TV/Radio Communications for broadcast in Cree & English for 4 consecutive days from receipt

ODEI RIVER FLOW 60 Day Flow Forecast May 1, 2026 to Jun 30, 2026  
 Station: 05TG003 Odei River near Thompson



- Notes:
- Based on Manitoba Hydro Forecast dated: Apr 30, 2026
  - Period of Record: Apr/79 to Present
  - Historical daily minimum & maximum flows pertain to the period of record above
  - Conversion: 1 cms = 35.31 cfs



2026 04 30

## NOTICE OF OPERATING PLAN FORECAST - **PLAYGREEN LAKE**

On May 1, 2026 the level of Playgreen Lake at Norway House is forecasted to be 711.3 feet. The level of the lake is expected to rise 1 foot to elevation 712.2 feet by the end of May.

During the month of June the level of the lake is expected to rise 7 inches to elevation 712.8 feet by the end of the month.

For water level and flow information including near real-time water levels and 14-day forecast estimates, please visit Manitoba Hydro's website at [www.hydro.mb.ca/waterlevels](http://www.hydro.mb.ca/waterlevels)

**Distribution List:**

CHIEF, Norway House Cree Nation

MAYOR, Norway House Community Council

MB Transportation & Infrastructure, Lokesh Kumar

Norway House Cree Nation, Keenanow Trust

Manitoba Métis Federation, Winnipeg

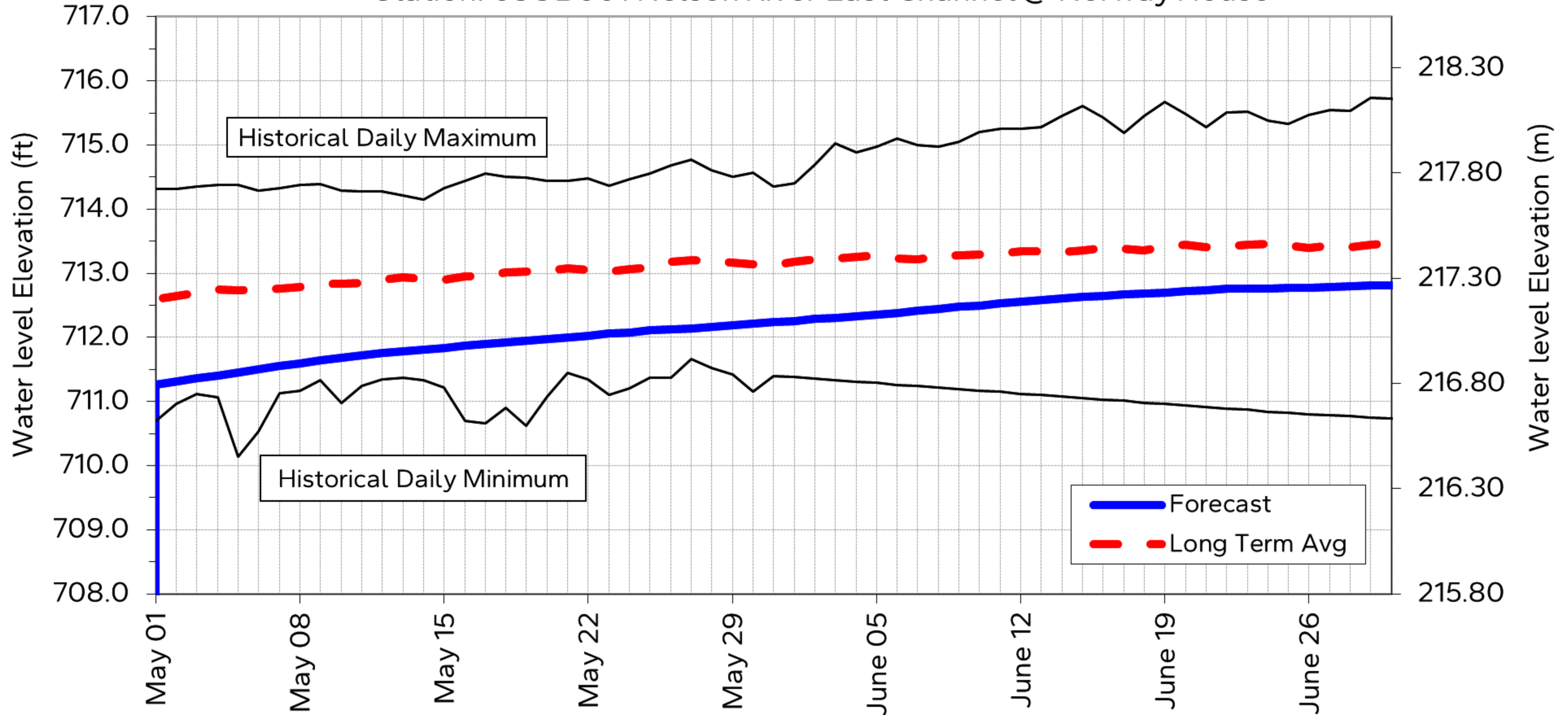
Regional Director General, Manitoba Region, Indigenous Services Canada

CBC North Country Radio for broadcast as Community Service Announcement

Arctic Radio CHTM Thompson for broadcast in Cree & English @ 7:00 PM & 8:30 PM for 4 consecutive days from

Norway House Radio for broadcast in Cree & English for @ 12:15 PM & 5:45 PM 4 consecutive days from receipt

PLAYGREEN LAKE 60 Day Water Level Forecast May 1, 2026 to Jun 30, 2026  
 Station: 05UB001 Nelson River East Channel @ Norway House



Notes:

- Based on Manitoba Hydro Forecast dated: Apr 30, 2026
- Period of Record: Apr/77 to Present
- Historical daily minimum & maximum water levels pertain to the period of record above
- Conversion: 1 foot = 0.3048 metres



Please post this graph in a conspicuous location for residents' reference.

2026 04 30

## NOTICE OF OPERATING PLAN FORECAST - **THOMPSON SEAPLANE BASE**

On May 1, 2026 the level of the river near Thompson Seaplane Base is forecasted to be 611.9 feet. The level of the river is expected to fall 1 inch to elevation 611.7 feet by the first week of the month and then rise 2 feet 6 inches to elevation 614.2 feet by the end of May.

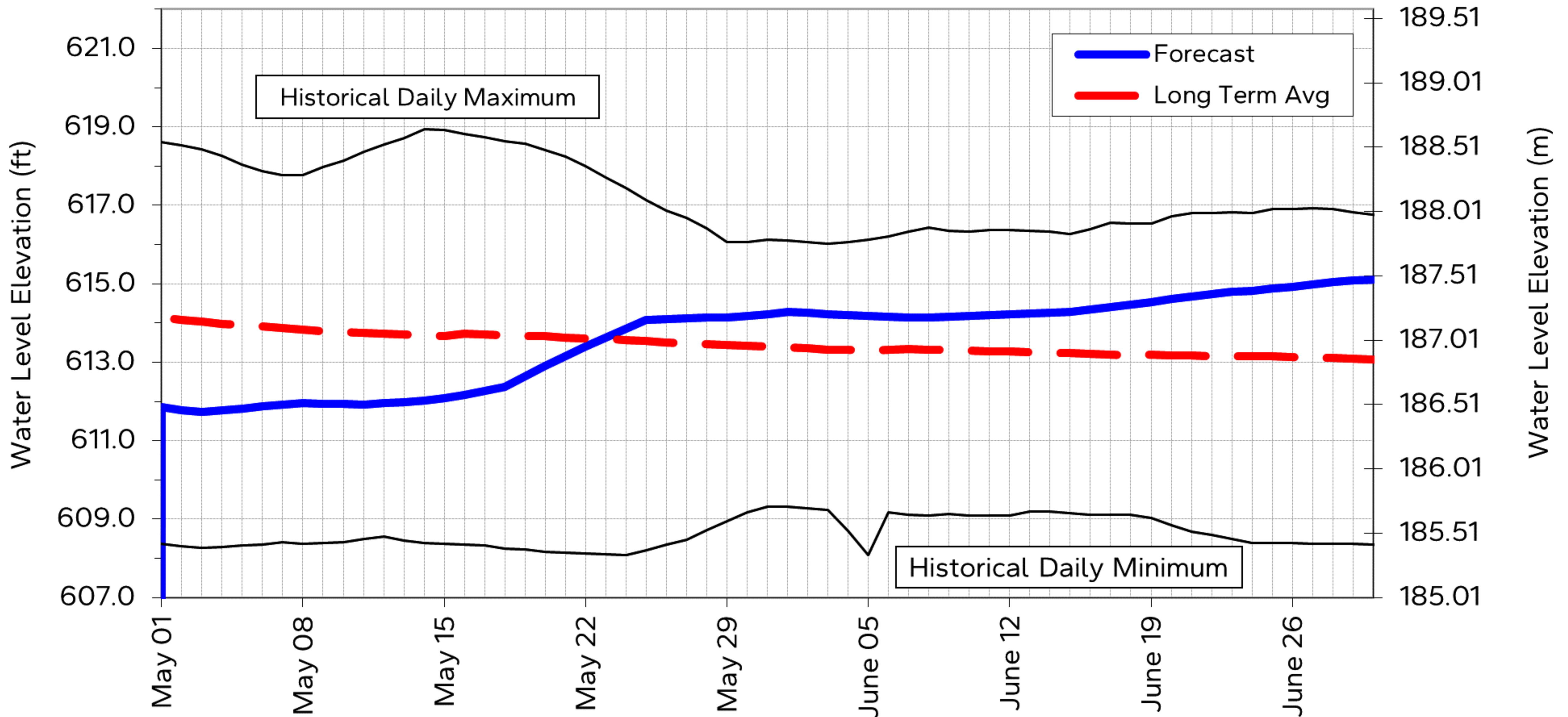
During the month of June the level of the river is expected to fall 2 inches to elevation 614.1 feet by the second week of the month and then rise 11 inches to elevation 615.1 feet by the end of the month.

For water level and flow information including near real-time water levels and 7-day forecast estimates, please visit Manitoba Hydro's website at [www.hydro.mb.ca/waterlevels](http://www.hydro.mb.ca/waterlevels)

**Distribution List:**

MAYOR, City of Thompson  
Seaplane Base Office, Thompson  
Thompson Floatplane Association, Ron Stadnek  
Manitoba Métis Federation, Winnipeg

THOMPSON SEAPLANE BASE 60 Day Water Level Forecast May 1, 2026 to Jun 30, 2026  
 Station: 05TG702 Burntwood River 0.2km below Miles Hart Bridge



Notes:

- Based on Manitoba Hydro Forecast dated: Apr 30, 2026
- Period of Record: May/77 to Present
- Historical daily minimum & maximum water levels pertain to the period of record above
- Conversion: 1 foot = 0.3048 metres

Please post this graph in a conspicuous location for residents' reference.



---

2026 04 30

## NOTICE OF OPERATING PLAN FORECAST - **SOUTHERN INDIAN LAKE**

On May 1, 2026 the level of Southern Indian Lake is forecasted to be 843.5 feet. The level of the lake is expected to rise 1 foot 8 inches to elevation 845.1 feet by the end of May.

During the month of June the level of the lake is expected to rise 1 foot 2 inches to elevation 846.4 feet by the end of the month.

For water level and flow information including near real-time water levels and 7-day forecast estimates, please visit Manitoba Hydro's website at [www.hydro.mb.ca/waterlevels](http://www.hydro.mb.ca/waterlevels)

**Distribution List:**

CHIEF, O-Pipon-Na-Piwin Cree Nation, South Indian Lake

CHIEF, Tataskweyak Cree Nation, Split Lake

CHIEF, War Lake First Nation, Ilford

MB Transportation & Infrastructure, Lokesh Kumar

SIL Trappers Association & SIL Fishermens Association, S. Ducharme, South Indian Lake

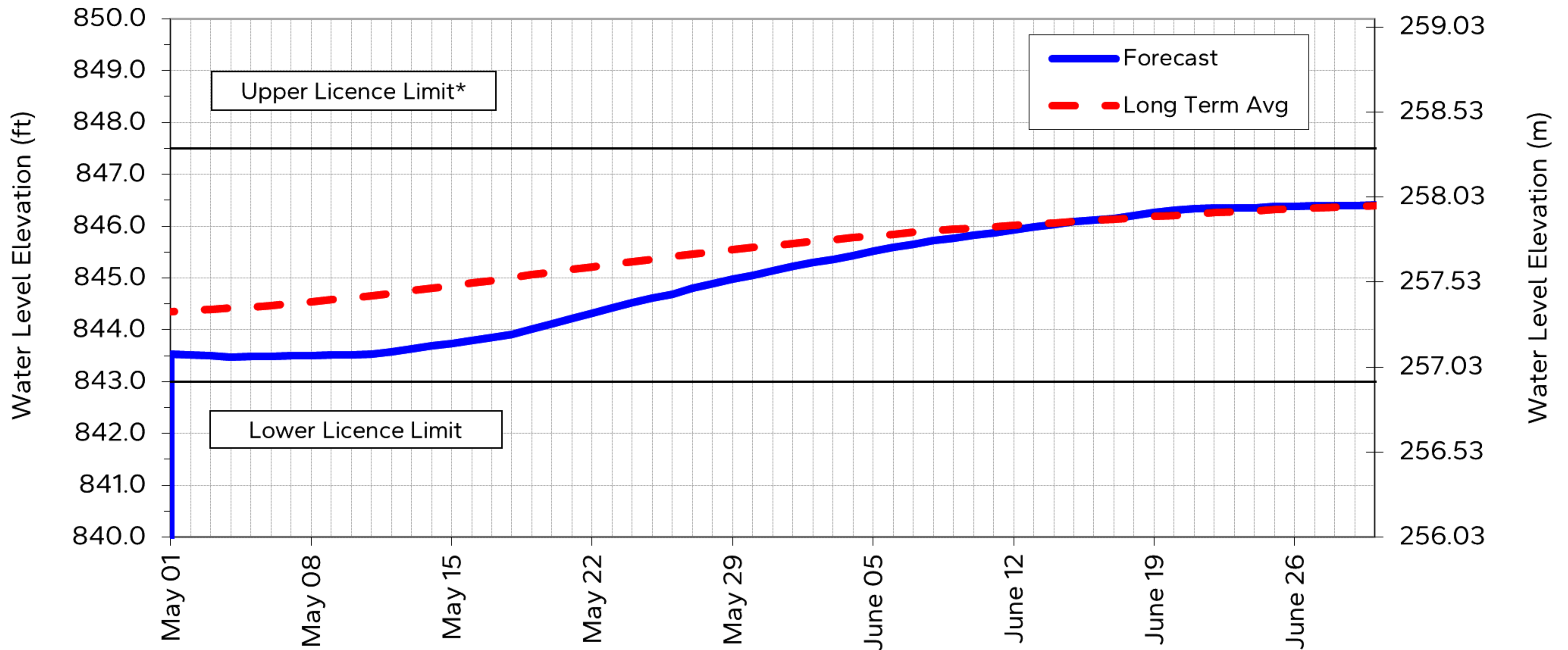
South Indian Lake Environmental Steering Committee, O-Pipon-Na-Piwin Cree Nation, South Indian Lake

Manitoba Métis Federation, Winnipeg

Regional Director General, Manitoba Region, Indigenous Services Canada

Arctic Radio CHTM Thompson for broadcast in Cree & English @ 7:00 PM & 8:30 PM for 4 consecutive days from receipt  
Radio station 101.9

SOUTHERN INDIAN LAKE 60 Day Water Level Forecast May 1, 2026 to Jun 30, 2026  
 Station: Average of 06EC001, 06EC003, 06EC006, 06EC007



Notes:

- Based on Manitoba Hydro Forecast dated: Apr 30, 2026
- Period of Record: Apr/77 to Present
- Conversion: 1 foot = 0.3048 metres

\*When lake level exceeds this limit, maximum discharge is required to return the lake level below this limit

Please post this graph in a conspicuous location for residents' reference.



---

2026 04 30

## NOTICE OF OPERATING PLAN

### FORECAST - **SOUTHERN INDIAN LAKE INFLOWS**

On May 1, 2026 the Southern Indian Lake inflow is forecast to be 16,400 cubic feet per second (cfs). The lake inflow is expected to gradually increase to 31,300 cfs by the second week of the month, be increased on May 14 to 34,900 cfs, increased on May 15 to 39,600 cfs, increased on May 16 to 43,100 cfs, increased on May 17 to 46,300 cfs, gradually increase to 49,900 cfs by the third week of the month and then gradually decrease to 45,800 cfs by the end of May.

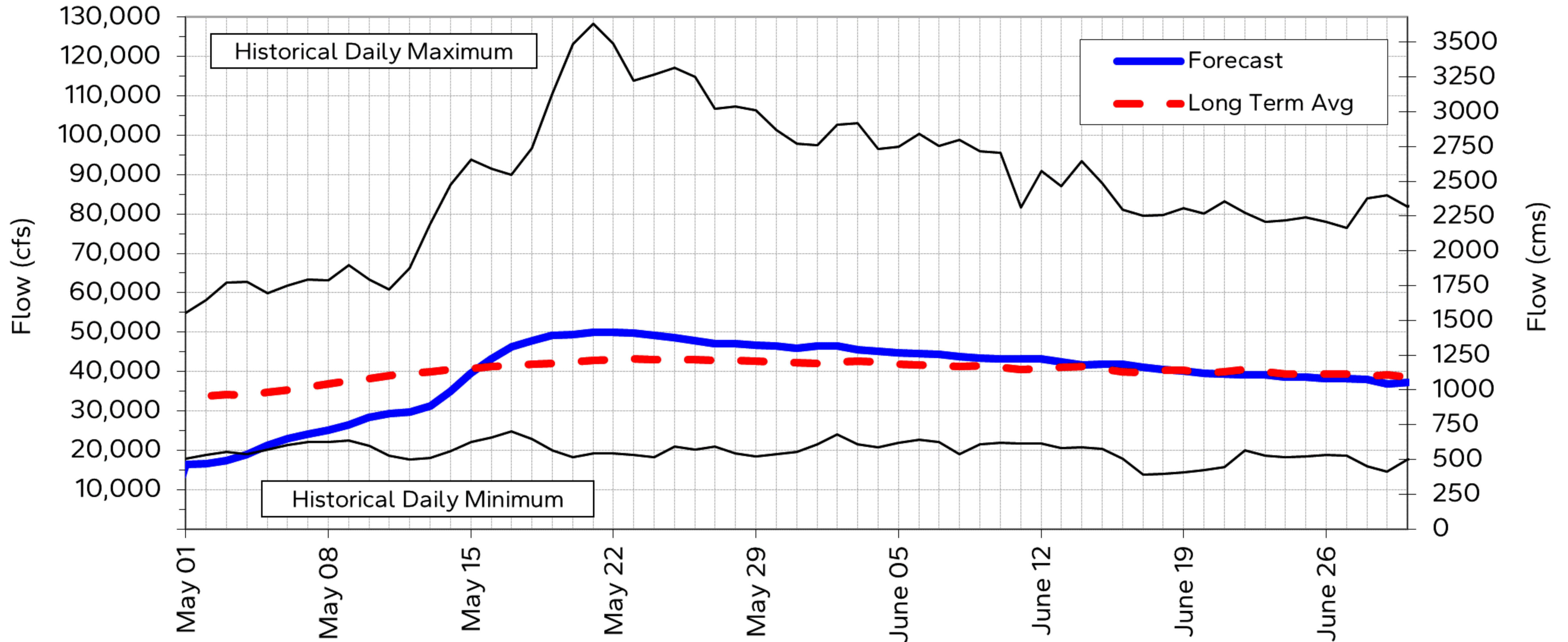
During the month of June the inflow is expected to gradually decrease to 43,300 cfs by the second week of the month, gradually decrease to 41,700 cfs by the third week of the month and then gradually decrease to 37,000 cfs by the end of the month.

**Distribution List:**

CHIEF, Tataskweyak Cree Nation, Split Lake  
CHIEF, Nisichawayasihk Cree Nation  
CHIEF, War Lake First Nation, Ilford  
MAYOR, Nelson House Community Council  
CHIEF, O-Pipon-Na-Piwin Cree Nation  
SIL Trappers Association & SIL Fishermens Association, S. Ducharme, South Indian Lake  
South Indian Lake Environmental Steering Committee, O-Pipon-Na-Piwin Cree Nation, South Indian Lake  
Manitoba Métis Federation, Winnipeg  
Regional Director General, Manitoba Region, Indigenous Services Canada  
Radio station 101.9  
NCN Achimowin TV/Radio Communications for broadcast in Cree & English for 4 consecutive days fro

# SOUTHERN INDIAN LAKE INFLOWS 60 Day Flow Forecast May 1, 2026 to Jun 30, 2026

## Station: Calculated



**Notes:**

- Based on Manitoba Hydro Forecast dated: Apr 30, 2026
- Period of Record: Apr/77 to Present
- Historical daily minimum & maximum flows pertain to the period of record above
- Conversion: 1 cms = 35.31 cfs

2026 04 30

## NOTICE OF OPERATING PLAN FORECAST - **SIPIWESK LAKE**

On May 1, 2026 the level of Sipiwesk Lake is forecasted to be 607.4 feet. The level of the lake is expected to rise 1 foot 1 inch to elevation 608.4 by the end of May.

During the month of June the level of the lake is expected to fall 4 inches to elevation 608.0 feet by the third week of the month and then rise 10 inches to elevation 608.8 feet by the end of the month.

For water level and flow information including near real-time water levels and 14-day forecast estimates, please visit Manitoba Hydro's website at [www.hydro.mb.ca/waterlevels](http://www.hydro.mb.ca/waterlevels)

**Distribution List:**

CHIEF, Cross Lake First Nation

MAYOR, Cross Lake Community Council

Wabowden Community Council

Communications Officer, Pimicikamak Cree Nation

Tataskweyak Trust, Key Communicator, J. Garson, Split Lake

Manitoba Métis Federation, Winnipeg

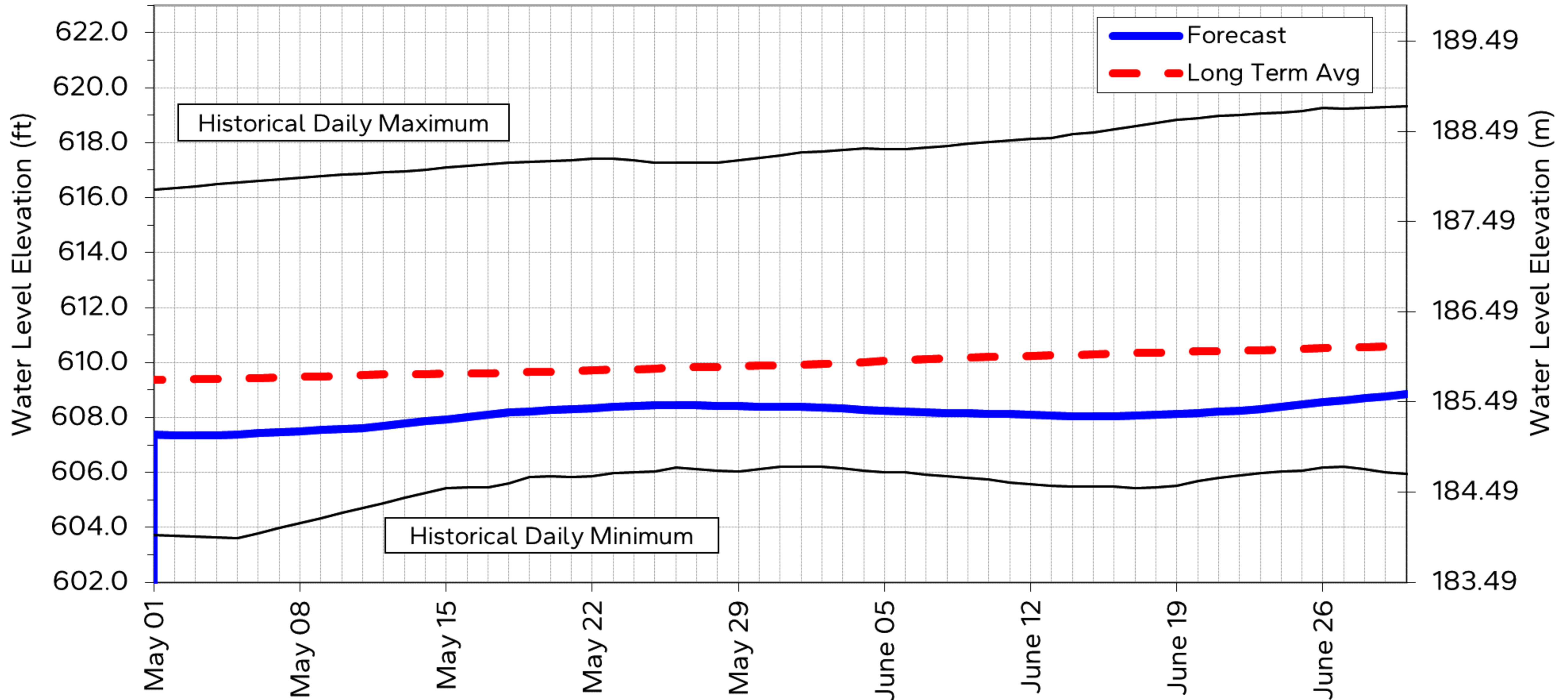
Regional Director General, Manitoba Region, Indigenous Services Canada

CBC North Country Radio for broadcast as Community Service Announcement

Arctic Radio CHTM Thompson for broadcast in Cree & English @ 7:00 PM & 8:30 PM for 4 consecutive days from receipt

CFNC Cross Lake Radio for broadcast in Cree & English @ 12:30 PM & 6:30 PM for 4 consecutive days from receipt

SIPIWESK LAKE 60 Day Water Level Forecast May 1, 2026 to Jun 30, 2026  
 Station: 05UD006 Sipiwesk Lake @ Forestry Dock



Notes:

- Based on Manitoba Hydro Forecast dated: Apr 30, 2026
- Period of Record: Apr/77 to Present
- Historical daily minimum & maximum water levels pertain to the period of record above
- Conversion: 1 foot = 0.3048 metres

Please post this graph in a conspicuous location for residents' reference.



---

2026 04 30

## NOTICE OF OPERATING PLAN FORECAST - **SPLIT LAKE**

On May 1, 2026 the level of Split Lake is forecasted to be 547.1 feet. The level of the lake is expected to rise 2 inches to elevation 547.2 feet by the first week of the month, fall 6 inches to elevation 546.6 feet by the third week of the month, and then rise 1 foot 6 inches to elevation 548.4 feet by the end of May.

During the month of June the level of the lake is expected to fall 7 inches to elevation 547.8 feet by the third week of the month and then rise 4 inches to elevation 548.2 feet by the end of the month.

For water level and flow information including near real-time water levels and 7-day forecast estimates, please visit Manitoba Hydro's website at [www.hydro.mb.ca/waterlevels](http://www.hydro.mb.ca/waterlevels)

**Distribution List:**

CHIEF, Tataskweyak Cree Nation, Split Lake

CHIEF, York Factory First Nation, York Landing

CHIEF, War Lake First Nation, Ilford

MB Transportation & Infrastructure, Lokesh Kumar

Tataskweyak Trust, Key Communicator, J. Garson, Split Lake

Tataskweyak Trust, Mgr, M. Garson, Split Lake

Tataskweyak Environmental Monitoring Agency, Split Lake

YFFN Director of Operations, York Landing

Manitoba Métis Federation, Winnipeg

Regional Director General, Manitoba Region, Indigenous Services Canada

CBC North Country Radio for broadcast as Community Service Announcement

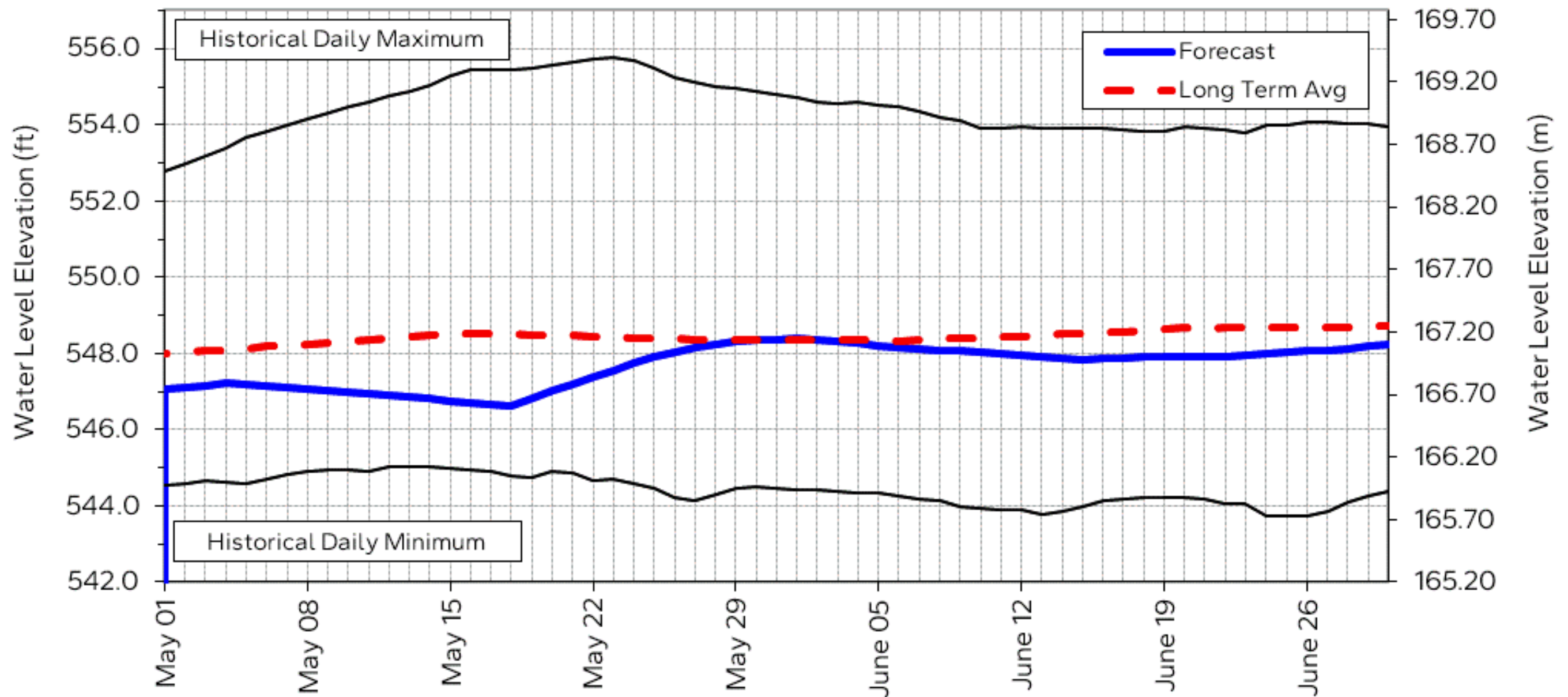
Arctic Radio CHTM Thompson for broadcast in Cree & English @ 7:00 PM & 8:30 PM for 4 consecutive days from receipt

CJKD Split Lake Radio for broadcast in Cree & English twice daily for 4 consecutive days from receipt

CHYL York Landing Radio for broadcast in Cree & English twice daily for 4 consecutive days from receipt

# SPLIT LAKE 60 Day Water Level Forecast May 1, 2026 to June 30, 2026

Station: 05UF003 Split Lake @ Split Lake



## Notes:

- Based on Manitoba Hydro Forecast dated: Apr 30, 2026
- Period of record shown: Sep/77 to Present
- Historical daily minimum & maximum water levels pertain to the period of record above
- Conversion: 1 foot = 0.3048 metres

Please post this graph in a conspicuous location for residents' reference.

---

2026 04 30

## NOTICE OF OPERATING PLAN FORECAST - **STEPHENS LAKE**

On May 1, 2026 the level of Stephens Lake is forecasted to be 459.1 feet. The level of the lake is expected to fall 1 inch to elevation 459.0 feet by the first week of the month, rise 1 foot 8 inches to elevation 460.8 feet by the fourth week of the month, and then fall 2 inches to elevation 460.6 feet by the end of May.

During the month of June the level of the lake is expected to fall 6 inches to elevation 460.1 feet by the fourth week of the month and then rise 2 inches to elevation 460.3 feet by the end of the month.

For water level and flow information including near real-time water levels and 7-day forecast estimates, please visit Manitoba Hydro's website at [www.hydro.mb.ca/waterlevels](http://www.hydro.mb.ca/waterlevels)

**Distribution List:**

CHIEF, Tataskweyak Cree Nation, Split Lake

CHIEF, York Factory First Nation, York Landing

CHIEF, Fox Lake First Nation, Gillam

CHIEF, War Lake First Nation, Ilford

Ilford Community Council, Ilford

Tataskweyak Trust, Key Communicator, J. Garson, Split Lake

Tataskweyak Trust, Mgr, M. Garson, Split Lake

YFFN Director of Operations, York Landing

Manitoba Métis Federation, Winnipeg

Regional Director General, Manitoba Region, Indigenous Services Canada

Associate Director for Implementation and Future Development, Val Massan

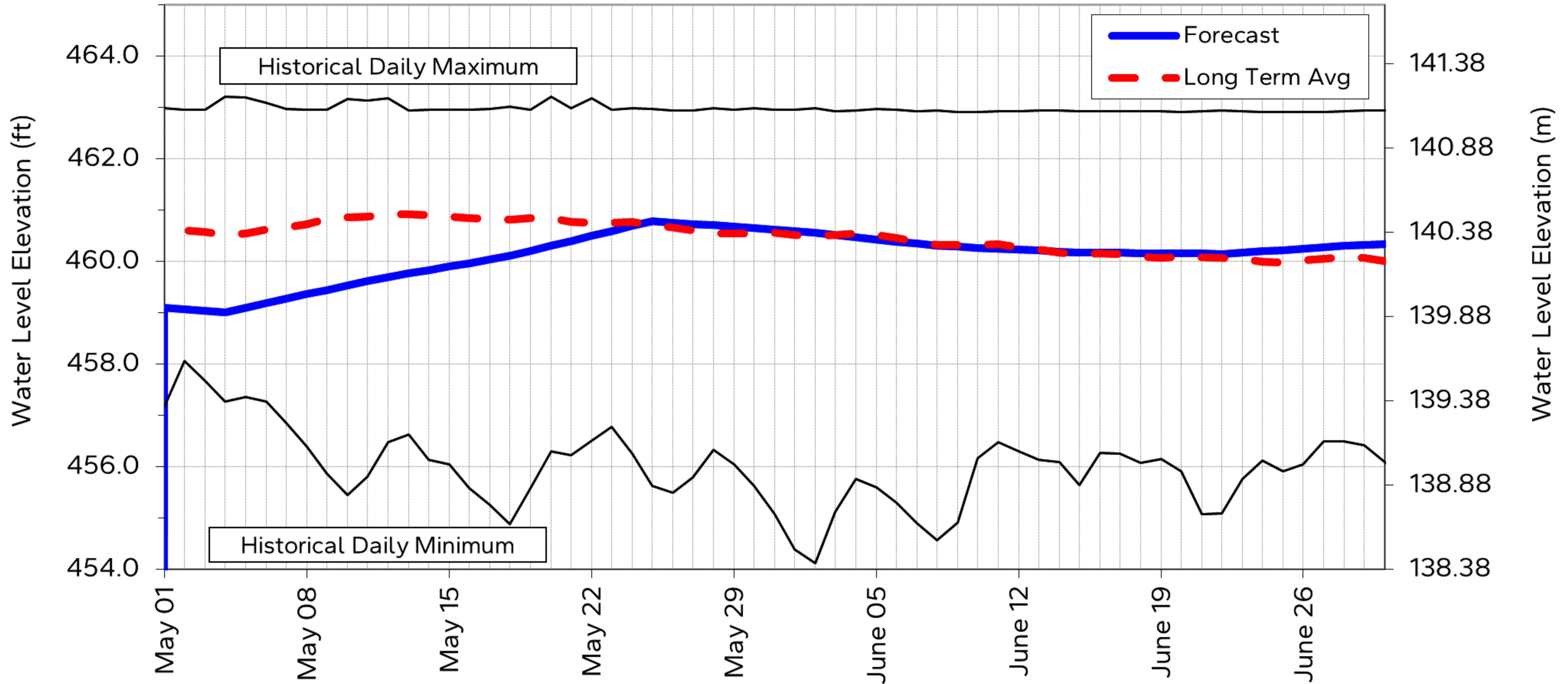
CBC North Country Radio for broadcast as Community Service Announcement

Arctic Radio CHTM Thompson for broadcast in Cree & English @ 7:00 PM & 8:30 PM for 4 consecutive days from receipt

CJKD Split Lake Radio for broadcast in Cree & English twice daily for 4 consecutive days from receipt

CHYL York Landing Radio for broadcast in Cree & English twice daily for 4 consecutive days from receipt

## STEPHENS LAKE 60 Day Water Level Forecast May 1, 2026 to Jun 30, 2026 Station: Kettle GS



**Notes:**

- Based on Manitoba Hydro Forecast dated: Apr 30, 2026
- Period of Record: Sep/77 to Present
- Historical daily minimum & maximum water levels pertain to the period of record above
- Conversion: 1 foot = 0.3048 metres

**Please post this graph in a conspicuous location for residents' reference.**

